



**COMPANY**  
-STITCH-

A DIVISION OF EAST COAST MEDIA

**SPRING 2018**

**BASEBALL/SOFTBALL**



BACK

FAUX  
PLACKET  
FOR EASIER  
DECORATING



## Ladies Blaze Jersey

- Dry-Excel™ Pin-Dot performance knit, polyester with wicking and soil-release properties
- Ladies' fit
- Faux full button jersey
- Buttons spaced for easy embellishment
- Contrast color inserts and piping
- Raglan sleeves
- Contoured bottom

**221369 Ladies** **RELAXED**  
XS-2XL MSRP 41.00



BLACK/  
WHITE  
420

FOREST/  
WHITE  
436

LT GOLD/  
WHITE  
752



MAROON/  
WHITE  
380

NAVY/  
WHITE  
301

PURPLE/  
WHITE  
450



ROYAL/  
WHITE  
280

SCARLET/  
WHITE  
408

WHITE/  
WHITE  
230



BACK



## Ladies Rage Jersey

- Dry-Excel™ Pin-Dot performance knit, polyester with wicking and soil-release properties
- Ladies' fit
- Two-button placket
- Contrast color inserts and piping
- Raglan sleeves
- Contoured bottom

**221361 Ladies** **RELAXED**  
XS-2XL MSRP 39.00



BLACK/  
WHITE  
420

FOREST/  
WHITE  
436

KELLY/  
WHITE  
340

LT GOLD/  
WHITE  
752



NAVY/  
WHITE  
301

ORANGE/  
WHITE  
320

ROYAL/  
WHITE  
280



SCARLET/  
WHITE  
408

VEGAS  
GOLD/  
WHITE  
250

WHITE/  
WHITE  
230





## Ladies Change-Up Jersey

- 4-Way stretch wicking mesh made of poly/spandex
- Modern camo sublimated inserts on 100% Dry-Excel™ polyester
- Ladies' fit
- V-neck collar
- Set-in sleeves
- Contoured bottom

**221317 Ladies** **RELAXED**  
S-2XL MSRP 35.40

**221417 Girls** **RELAXED**  
S-XL MSRP 33.30



BLACK/WHITE/WHITE PRINT D89  
BRIGHT BLUE/WHITE/WHITE PRINT V51  
BRIGHT YELLOW/WHITE/WHITE PRINT V50  
GRAPHITE/WHITE/WHITE PRINT D91



LIME/WHITE/WHITE PRINT V52  
NAVY/WHITE/WHITE PRINT D93  
ORANGE/WHITE/WHITE PRINT V53  
POWER PINK/WHITE/WHITE PRINT V54



ROYAL/WHITE/WHITE PRINT D95  
SCARLET/WHITE/WHITE PRINT D96  
VEGAS GOLD/WHITE/WHITE PRINT V57  
WHITE/GRAPHITE/WHITE PRINT V58



## Ladies Rematch Jersey

- Dry-Excel™ Micro-Interlock is a smooth polyester fabric with high mechanical stretch that includes superior wicking technology and an odor resistant treatment
- Dry-Excel™ Perform micromesh blocking placed along heat zones for ventilation
- Ladies' fit
- V-neck collar
- Contrast color inserts and piping
- Set-in sleeves
- Contoured bottom

**221359 Ladies** **RELAXED**  
S-2XL MSRP 33.00

**221459 Girls** **RELAXED**  
S-XL MSRP 31.00



BLACK/ORANGE 423  
BLACK/SCARLET 500  
BLACK/WHITE 420  
DARK MAROON/WHITE 741



FOREST/WHITE 436  
NAVY/WHITE 301  
PURPLE/WHITE 450



ROYAL/LT GOLD S67  
ROYAL/WHITE 280  
SCARLET/WHITE 408



## Ladies Rise Jersey

- Dry-Excel™ Micro-Interlock is a smooth polyester fabric with high mechanical stretch that includes superior wicking technology and an odor resistant treatment
- Blown-out back and front inserts with dry-Excel™ micromesh provides ventilation
- Ladies' fit
- V-neck collar
- Contrast color inserts

**221368 Ladies** **SEMI-FIT**  
S-2XL MSRP 30.20

**221468 Girls** **SEMI-FIT**  
S-XL MSRP 28.10



BLACK/BLUE GREY/WHITE U33  
DARK MAROON/BLACK/WHITE T14  
FOREST/BLACK/WHITE 148  
LT GOLD/BLACK/WHITE T61  
ORANGE/BLACK/WHITE 322



PURPLE/BLACK/WHITE 497  
ROYAL/BLACK/WHITE 526  
SCARLET/BLACK/WHITE 952  
TRUE NAVY/BLUE GREY/WHITE F93  
WHITE/BLUE GREY/BLACK/WHITE U72

# UPGRADE FROM STOCK TO CUSTOM SUBLIMATION

## TAKE CONTROL OF YOUR UNIFORM

Utilize our selection of colors, fonts, mascots and patterns for a standard 20 day lead time.

Incorporate your own artwork in a 25 day lead time from art approval.

**10 Day lead time**  
with express pricing.

SONAR  
DESIGN



**46+**  
Pattern Fills



**Full  
Mascot  
Library**

**HARDBALL SHOGUN FULLBLOCK GAMEDAY  
CENTURY GAMEDAY IMPACT FANCY graffiti  
SERPENTINE CHISEL DIVER COMPACT**

**21+**  
Fonts





### Ladies Pin-Dot Short Sleeve Jersey

- Dry-excel™ pin-dot performance knit fabric
- 10 builder design lines available

**228350 Ladies** **RELAXED**  
S-3XL MSRP 65.00

**228350 Girls** **RELAXED**  
S-XL MSRP 63.00



### Ladies Lightweight Short Sleeve Jersey

- Dry-excel™ micro-interlock polyester
- 10 builder design lines available

**228335 Ladies** **RELAXED**  
S-3XL MSRP 55.00

**228335 Girls** **RELAXED**  
S-XL MSRP 53.00



### Ladies Pin-Dot Short

- Dry-excel™ pin-dot performance knit fabric
- 10 builder design lines available

**228355 Ladies** **RELAXED**  
S-3XL MSRP 56.00

**228355 Girls** **RELAXED**  
S-XL MSRP 54.00



### Ladies Pin-Dot Sleeveless Jersey

- Dry-excel™ pin-dot performance knit fabric
- 10 builder design lines available

**228354 Ladies** **RELAXED**  
S-3XL MSRP 60.00

**228354 Girls** **RELAXED**  
S-XL MSRP 58.00



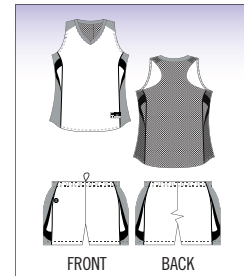
### Ladies Lightweight Short

- Dry-excel™ micro-interlock polyester
- 10 builder design lines available

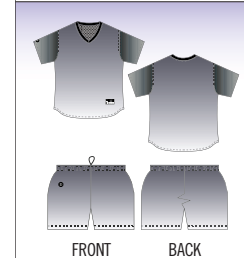
**228336 Ladies** **RELAXED**  
S-3XL MSRP 46.00

**228336 Girls** **RELAXED**  
S-XL MSRP 44.00

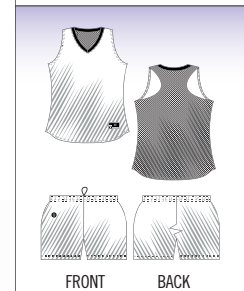
### NEW Design Lines



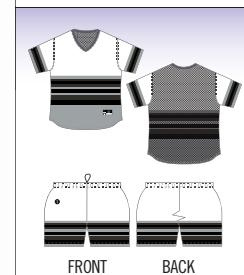
NEW Pivot



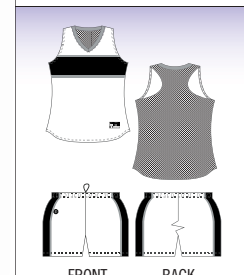
NEW Gradient



NEW Cosmic



NEW Integrate



NEW Blockade



BACK



## Ladies Faux Front Jersey

- 100% polyester Essortex wicking fabric
- 92% polyester/8% spandex wicking pinhole mesh inserts
- Ladies' fit
- Faux full button jersey
- Buttons spaced for easy embellishment
- Contrast color insert and piping
- Set-in sleeves
- Contoured bottom

**312142 Ladies** **RELAXED**  
S-2XL MSRP 28.10

**312143 Girls** **RELAXED**  
M-L MSRP 26.00



BLACK/  
WHITE/  
WHITE  
R30

COL. BLUE/  
NAVY/  
WHITE  
614

RASBERRY/  
BLACK/  
WHITE  
593

LIME/  
BLACK/  
WHITE  
680



MAROON/  
BLACK/  
WHITE  
524

NAVY/  
SILVER GREY/  
WHITE  
515

ORANGE/  
BLACK/  
WHITE  
322

PURPLE/  
BLACK/  
WHITE  
497



ROYAL/  
BLACK/  
WHITE  
526

SCARLET/  
BLACK/  
WHITE  
952

TEAL/  
BLACK/  
WHITE  
332

WHITE/  
BLACK/  
WHITE  
132



BACK



## Ladies Galaxy Full-Button Jersey

- 100% polyester Essortex wicking grid mesh
- 92% polyester/8% spandex wicking pinhole mesh inserts
- Ladies' fit
- Full-button jersey
- Buttons spaced for easy embellishment
- Contrast color inserts
- Raglan sleeves
- Contoured bottom

**312172 Ladies** **RELAXED**  
S-2XL MSRP 27.00

**312173 Girls** **RELAXED**  
M-L MSRP 25.00



ATHLETIC  
GOLD/  
BLACK/  
WHITE  
657

BLACK/  
BLACK/  
WHITE  
529

COLUMBIA  
BLUE/  
NAVY/  
WHITE  
614

ROYAL/  
BLACK/  
WHITE  
526

NAVY/  
NAVY/  
WHITE  
U24

PURPLE/  
BLACK/  
WHITE  
497



RASBERRY/  
BLACK/  
WHITE  
593

SCARLET/  
BLACK/  
WHITE  
952

SCARLET/  
NAVY/  
WHITE  
656

VEGAS/  
BLACK/  
WHITE  
251

WHITE/  
WHITE/  
SILVER GREY  
216





BACK



ATHLETIC GOLD/WHITE 596  
BLACK/WHITE 420  
COL. BLUE/WHITE 293  
FOREST/WHITE 436  
GRAPHITE/WHITE R04



LIME/WHITE 693  
MAROON/WHITE 380  
NAVY/WHITE 301  
ORANGE/WHITE 320



PURPLE/WHITE 450  
ROYAL/WHITE 280  
SCARLET/WHITE 408  
WHITE/SILVER GREY 363



## Ladies Double Play Jersey

- 100% polyester Essortex seed mesh
- 92% polyester/8% spandex wicking pinhole mesh inserts
- Ladies' fit
- Two-button placket
- Contrast color inserts
- Raglan sleeves
- Contoured bottom

**312192 Ladies** **RELAXED**  
S-2XL MSRP 26.00

**312193 Girls** **RELAXED**  
S-L MSRP 23.90



BACK



WHITE/BLACK 226  
WHITE/GRAPHITE 751  
WHITE/NAVY 221



WHITE/ROYAL 220  
WHITE/SCARLET 235



## Ladies Lightning V-Neck Jersey

- 100% polyester Essortex wicking fabric
- Ladies' fit
- V-neck collar
- Contrast color inserts
- Set-in sleeves

**312182 Ladies** **RELAXED**  
S-2XL MSRP 17.70

**312183 Girls** **RELAXED**  
M-L MSRP 15.60



BACK



## Ladies Fever Jersey

- 100% polyester Essortex wicking fabric
- 92% polyester/8% spandex wicking pinhole mesh inserts
- Ladies' fit
- V-neck collar
- Contrast color inserts
- Fishtail bottom

**312152 Ladies** **RELAXED**  
S-2XL MSRP 20.80

**312153 Girls** **RELAXED**  
S-L MSRP 18.70



ATHLETIC  
GOLD/  
BLACK/  
WHITE  
657

BLACK/  
ORANGE/  
WHITE  
611

BLACK/  
RASPBERRY/  
WHITE  
W10

BLACK/  
WHITE/  
SILVER GREY  
674

COL. BLUE/  
NAVY/  
WHITE  
614



FOREST/  
VEGAS GOLD/  
WHITE  
W21

LIME/  
BLACK/  
WHITE  
680

MAROON/  
ATHLETIC  
GOLD/WHITE  
W40

NAVY/  
WHITE/  
SILVER GREY  
672

ORANGE/  
BLACK/  
WHITE  
322



ROYAL/  
BLACK/  
WHITE  
526

ROYAL/  
SCARLET/  
WHITE  
282

SCARLET/  
BLACK/  
WHITE  
952

TEAL/  
BLACK/  
WHITE  
332



## Ladies Wave Jersey

- 100% polyester Essortex wicking fabric
- Ladies' fit
- V-neck collar
- Contrast color inserts and piping

**312032 Ladies** **RELAXED**  
S-2XL MSRP 18.70

**312033 Girls** **RELAXED**  
S-L MSRP 16.60



ATHLETIC  
GOLD/  
WHITE  
596

BLACK/  
WHITE  
420

COL. BLUE/  
WHITE  
293

FOREST/  
WHITE  
436

LIME/  
WHITE  
693



MAROON/  
WHITE  
380

NAVY/  
WHITE  
301

ORANGE/  
WHITE  
320

RASPBERRY/  
WHITE  
514



ROYAL/  
WHITE  
280

SCARLET/  
WHITE  
408

TEAL/  
WHITE  
331

WHITE/  
WHITE  
230





**Ladies Flex Jersey**

- 100% polyester Essortex wicking fabric
- Ladies' fit
- V-neck collar
- Contrast color piping

**312022 Ladies** **RELAXED**  
S-2XL MSRP 16.60

**312023 Girls** **RELAXED**  
S-L MSRP 14.60



315023  
PG. 69



ATHLETIC GOLD/WHITE 596  
BLACK/WHITE 420  
COL. BLUE/WHITE 293  
FOREST/WHITE 436  
LIME/WHITE 693



MAROON/WHITE 380  
NAVY/WHITE 301  
ORANGE/WHITE 320  
RASPBERRY/WHITE 514



ROYAL/WHITE 280  
SCARLET/WHITE 408  
TEAL/WHITE 331  
WHITE/WHITE 230



BACK



**Ladies Dynamite Jersey**

- 92% polyester/8% spandex wicking pinhole mesh
- Ladies' fit
- V-neck collar
- Contrast color inserts and piping

**312162 Ladies** **RELAXED**  
S-2XL MSRP 18.70

**312163 Girls** **RELAXED**  
S-L MSRP 16.60



ATHLETIC GOLD/BLACK/WHITE 657  
BLACK/BLACK/WHITE 529  
COL. BLUE/BLACK/WHITE 519  
FOREST/BLACK/WHITE 148  
LIME/BLACK/WHITE 680



MAROON/BLACK/WHITE 524  
NAVY/SILVER GREY/WHITE 515  
ORANGE/BLACK/WHITE 322  
PURPLE/BLACK/WHITE 497  
RASPBERRY/BLACK/WHITE 593



ROYAL/BLACK/WHITE 526  
SCARLET/BLACK/WHITE 952  
TEAL/BLACK/WHITE 332  
WHITE/BLACK/WHITE 132



### Ladies Closer Jersey

- 100% polyester action tex knit
- 92% polyester/8% spandex pinhole mesh inserts
- Ladies' fit
- Heat sealed label
- Faux full button jersey
- Buttons spaced for easy embellishment
- Contrast color inserts
- Set-in sleeves
- Contoured bottom

1654 Ladies **RELAXED**  
XS-2XL MSRP 26.90



BLACK/  
WHITE 420  
COL. BLUE/  
WHITE 293  
LIME/  
WHITE 693  
NAVY/  
WHITE 301



POWER  
PINK/  
WHITE 468  
RED/  
WHITE 400  
ROYAL/  
WHITE 280  
WHITE/  
BLACK 226

6267  
PG. 88



### Ladies Winner Jersey

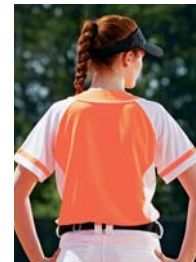
- 100% polyester propelit micromesh wicking knit body
- 92% polyester/8% spandex wicking pinhole mesh side panels
- Ladies' fit
- Pad print label
- Faux full button jersey
- Buttons spaced for easy embellishment
- Contrast color pinhole mesh sleeve and side inserts for breathability
- Contrast color sleeves and piping
- Raglan sleeves
- Fishtail bottom

1665 Ladies **RELAXED**  
S-3XL MSRP 26.90

1666 Girls **RELAXED**  
S-L MSRP 24.90



PINHOLE MESH  
INSERTS



BACK



BLACK/  
WHITE 420  
NAVY/  
WHITE 301  
POWER  
BLUE/  
WHITE 834  
POWER  
ORANGE/  
WHITE Y60



POWER  
PINK/  
WHITE 468  
RED/  
WHITE 400  
ROYAL/  
WHITE 280  
WHITE/  
WHITE 230





## Ladies Power Plus 2.0

- 100% polyester smooth knit with True Hue Technology
- True Hue Technology prevents dye migration Ladies' fit
- Pad print label
- Two-button placket
- Contrast color inserts
- Raglan sleeves

1559 Ladies **RELAXED**  
XS-2XL MSRP 20.70



COLUMBIA  
BLUE/  
WHITE/  
SILVER GREY  
690

DARK GREEN/  
WHITE/  
SILVER GREY  
671

GOLD/  
WHITE/  
BLACK  
655

LIME/  
WHITE/  
SILVER GREY  
687



MAROON/  
WHITE/  
SILVER GREY  
670

NAVY/  
WHITE/  
SILVER GREY  
672

ORANGE/  
WHITE/  
SILVER GREY  
686



POWER PINK/  
WHITE/  
SILVER GREY  
347

PURPLE/  
WHITE/  
SILVER GREY  
691

RED/  
WHITE/  
SILVER GREY  
673



ROYAL/  
WHITE/  
SILVER GREY  
689

SILVER GREY/  
WHITE/  
BLACK  
650

WHITE/  
SILVER GREY/  
BLACK  
654

1245



Coordinating  
Adult/Youth  
1557 | 1558  
pg. 23



BACK



## Ladies Overpower Two-Button Jersey

- 100% polyester propelit micromesh wicking knit
- Ladies' fit
- Pad print label
- Two-button placket
- Contrast color piping
- Raglan sleeves

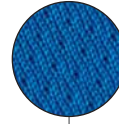
**1670** Ladies **RELAXED**  
S-2XL MSRP 22.80

**1671** Girls **RELAXED**  
S-L MSRP 20.70

963  
PG. 70



PROPELIT  
MESH



BLACK/  
WHITE 420  
LIME/  
WHITE 693  
NAVY/  
WHITE 301  
ORANGE/  
WHITE 320  
POWER  
BLUE/  
WHITE 834



POWER  
PINK/  
WHITE 468  
POWER  
YELLOW/  
WHITE 327  
RED/  
WHITE 400  
ROYAL/  
WHITE 280  
WHITE/  
SILVER  
GREY E64



## Ladies Blast Jersey

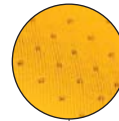
- 100% polyester wicking knit body
- 92% polyester/8% spandex pinhole mesh inserts
- Ladies' fit
- Heat sealed label
- Two-button placket
- Contrast color pinhole mesh sleeve and side inserts for breathability
- Contrast color inserts and piping
- Raglan sleeves
- Contoured bottom

**1532** Ladies **RELAXED**  
S-2XL MSRP 24.90

**1533** Girls **RELAXED**  
S-L MSRP 21.80



PINHOLE  
MESH INSERT



BLACK/  
POWER  
PINK/  
WHITE 483  
BLACK/  
POWER  
YELLOW/  
WHITE 482  
BLACK/  
RED/  
WHITE 527  
GOLD/  
BLACK/  
WHITE 249



LIME/  
BLACK/  
WHITE 680  
NAVY/  
RED/  
WHITE 518  
ORANGE/  
BLACK/  
WHITE 322  
PURPLE/  
GOLD/  
WHITE 615



RED/  
BLACK/  
WHITE 110  
ROYAL/  
BLACK/  
WHITE 526  
ROYAL/  
RED/  
WHITE 115  
WHITE/  
BLACK/  
SILVER  
GREY 698





Coordinating Adult/Youth  
426 | 427  
pg. 26



### Ladies Wicking Two-Button Jersey

- 100% polyester wicking knit
- Ladies' fit
- Pad print label
- Two-button placket
- Set-in sleeves

**1212** Ladies **RELAXED**  
S-2XL MSRP 14.80

**1213** Girls **RELAXED**  
S-L MSRP 13.60



BLACK 080 D. GREEN 035 GOLD 025 MAROON 045

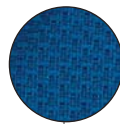


NAVY 065 ORANGE 029 PURPLE 050 RED 040



ROYAL 060 SILVER GREY 016 VEGAS GOLD 023 WHITE 005

WICKING  
DUO KNIT



### Ladies Diamond Jersey

- 100% polyester wicking Duo Knit
- Ladies' fit
- Heat sealed label
- One-button placket
- Contrast color inserts and piping
- Raglan sleeves
- Contoured bottom

**1225** Ladies **RELAXED**  
XS-2XL MSRP 24.40



BLACK/WHITE 420 COL. BLUE/WHITE 293 D. GREEN/WHITE 438 GOLD/WHITE 245



MAROON/WHITE 380 NAVY/WHITE 301 ORANGE/WHITE 320 POWER PINK/WHITE 468



RED/WHITE 400 ROYAL/WHITE 280 WHITE/BLACK 226



## Ladies Sleeveless Winner Jersey

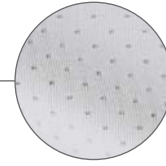
- 100% polyester propelit micromesh wicking knit body
- 92% polyester/8% spandex wicking pinhole mesh side inserts
- Ladies' fit
- Pad print label
- Faux full button jersey
- Buttons spaced for easy embellishment
- Contrast color pinhole mesh sleeve and side inserts for breathability
- Contrast color piping
- Fishtail bottom

**1668** Ladies **RELAXED**  
S-2XL MSRP 22.80

**1669** Girls **RELAXED**  
S-L MSRP 20.70



PINHOLE MESH INSERT



BLACK/  
WHITE  
420

NAVY/  
WHITE  
301

POWER  
BLUE/  
WHITE  
834

POWER  
ORANGE/  
WHITE  
Y60



POWER  
PINK/  
WHITE  
468

RED/  
WHITE  
400

ROYAL/  
WHITE  
280

WHITE/  
WHITE  
230

## Ladies Sleeveless Two-Button Softball Jersey

- 50% polyester/50% cotton jersey knit
- Ladies' fit
- Two-button placket

**550** Ladies **RELAXED**  
S-2XL MSRP 14.40

**551** Girls **RELAXED**  
S-L MSRP 12.40



WHITE  
005

ASH  
014

ATHLETIC  
HEATHER  
018

GOLD  
025

ORANGE  
029

KELLY  
030



D.GREEN  
035

RED  
040

MAROON  
045

PURPLE  
050

LT. BLUE  
055

ROYAL  
060



TEAL  
063

NAVY  
065

BLACK  
080

LT. PINK  
095



### Ladies Heat Jersey

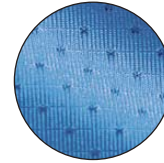
- 92% polyester/8% spandex wicking pinhole mesh
- Ladies' fit
- Heat sealed label
- V-neck collar
- Contrast color inserts
- Raglan sleeves
- Contoured bottom

**1270** Ladies **RELAXED**  
S-2XL MSRP 22.80

**1271** Girls **RELAXED**  
S-L MSRP 20.70



PINHOLE MESH PERFORMANCE FABRIC



PINHOLE MESH FABRIC PROVIDES UNPARALLELED FUNCTIONALITY WITH KEY HIGH PERFORMANCE FEATURES AND BENEFITS.



BLACK/WHITE 420  
COL. BLUE/WHITE 293  
LIME/WHITE 693  
NAVY/WHITE 301  
ORANGE/WHITE 320  
POWER PINK/WHITE 468



PURPLE/WHITE 450  
POWER YELLOW/WHITE 327  
RED/WHITE 400  
ROYAL/WHITE 280  
WHITE/BLACK 226



### Ladies Vigorous Jersey

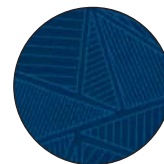
- 92% polyester/8% spandex wicking pinhole mesh
- 100% polyester printed wicking knit inserts and collar
- Ladies' fit
- Heat sealed label
- V-neck collar
- Contrast color digi printed inserts
- Set-in sleeves

**1360** Ladies **RELAXED**  
S-2XL MSRP 20.70

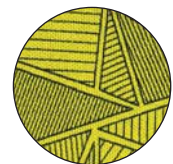
**1361** Girls **RELAXED**  
S-L MSRP 18.60



WHITE ULTRA GEO PRINT



BLACK ULTRA GEO PRINT



COLORS WITH WHITE PRINT



BLACK/BLACK/WHITE PRINT V70  
NAVY/NAVY/WHITE PRINT V71

COLORS WITH BLACK PRINT



GRAPHITE/GRAPHITE/BLACK PRINT X69  
LIME/LIME/BLACK PRINT V59  
ORANGE/ORANGE/BLACK PRINT V76  
POWER BLUE/POWER BLUE/BLACK PRINT V77  
POWER PINK/POWER PINK/BLACK PRINT V62

COLORS WITH BLACK PRINT



POWER YELLOW/POWER YELLOW/BLACK PRINT V78  
RED/RED/BLACK PRINT V72  
ROYAL/ROYAL/BLACK PRINT V73  
WHITE/GRAPHITE/BLACK PRINT X70





## Ladies Mystic Jersey

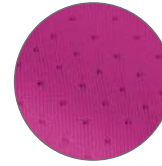
- 92% polyester/8% spandex wicking pinhole mesh
- Ladies' fit
- Heat sealed label
- V-neck collar
- Contrast color inserts
- Set-in sleeves

**1295** Ladies **RELAXED**  
S-2XL MSRP 18.60

**1296** Girls **RELAXED**  
S-L MSRP 16.50



PINHOLE MESH  
PERFORMANCE FABRIC



PINHOLE MESH FABRIC PROVIDES UNPARALLELED FUNCTIONALITY WITH KEY HIGH PERFORMANCE FEATURES AND BENEFITS.



BLACK/  
GRAPHITE/  
WHITE 489

COL. BLUE/  
GRAPHITE/  
WHITE 851

LIME/  
GRAPHITE/  
WHITE W18

NAVY/  
GRAPHITE/  
WHITE 371

ORANGE/  
GRAPHITE/  
WHITE W62

POWER  
PINK/  
GRAPHITE/  
WHITE 845



PURPLE/  
GRAPHITE/  
WHITE 647

POWER  
YELLOW/  
GRAPHITE/  
WHITE 848

RED/  
GRAPHITE/  
WHITE 397

ROYAL/  
GRAPHITE/  
WHITE 648

WHITE/  
GRAPHITE/  
WHITE 366



## Ladies Triumph Jersey

- 100% polyester wicking smooth knit
- 100% polyester wicking Duo Knit inserts
- Odor resistant
- Ladies' fit
- Heat sealed label
- V-neck collar
- Contrast color inserts and piping

**1235** Ladies **RELAXED**  
S-2XL MSRP 19.20

**1236** Girls **RELAXED**  
S-L MSRP 17.10



BLACK/  
WHITE 420

DARK  
GREEN/  
WHITE 438

GOLD/  
WHITE 245

MAROON/  
WHITE 380

NAVY/  
WHITE 301



ORANGE/  
WHITE 320

PURPLE/  
WHITE 450

RED/  
WHITE 400

ROYAL/  
WHITE 280

WHITE/  
WHITE 230



## Ladies Triumph Short

- 100% polyester wicking smooth knit
- 100% polyester wicking Duo Knit inserts
- Odor resistant
- Ladies' fit
- Heat sealed label
- Covered elastic waistband with inside drawcord
- 5-inch inseam
- Girls inseam graded
- Contrast color Duo Knit inserts

**1238** Ladies **RELAXED**  
S-2XL MSRP 18.50

**1239** Girls **RELAXED**  
S-L MSRP 16.30

6227



BACK



1242



## Ladies Paragon Jersey

- 100% polyester smooth knit body
- 100% polyester propelit micromesh inserts
- Ladies' fit
- Pad print label
- V-neck collar
- Contrast color inserts and piping

**1676 Ladies** **RELAXED**  
S-3XL MSRP 19.20

**1677 Girls** **RELAXED**  
S-L MSRP 17.20



BLACK/ WHITE/ SILVER GREY 674	COLUMBIA BLUE/ NAVY/ WHITE 614	DARK GREEN/ WHITE/ SILVER GREY 671	LIME/ WHITE/ BLACK 652	MAROON/ WHITE/ SILVER GREY 670
--	--	---	---------------------------------	---



NAVY/ RED/ WHITE 518	NAVY/ WHITE/ SILVER GREY 672	ORANGE/ WHITE/ SILVER GREY 686	POWER PINK/ WHITE/ BLACK 455
-------------------------------	---------------------------------------	---	---------------------------------------



PURPLE/ WHITE/ SILVER GREY 691	RED/ BLACK/ WHITE 110	ROYAL/ RED/ WHITE 115	WHITE/ BLACK/ WHITE 132
---	--------------------------------	--------------------------------	----------------------------------



## Ladies Wicking Mesh Powerhouse Jersey

- 100% polyester wicking mesh
- Ladies' fit
- Heat sealed label
- V-neck collar
- Contrast color inserts

**527** Ladies **RELAXED**  
S-2XL MSRP 20.70

**528** Girls **RELAXED**  
S-L MSRP 18.50



BLACK/  
WHITE 420  
COL. BLUE/  
WHITE 293  
D. GREEN/  
WHITE 438  
GOLD/  
WHITE 245  
MAROON/  
WHITE 380



NAVY/  
WHITE 301  
PURPLE/  
WHITE 450  
RED/  
WHITE 400  
ROYAL/  
WHITE 280  
WHITE/  
BLACK 226



WHITE/  
NAVY 221  
WHITE/  
RED 225  
WHITE/  
ROY 220



## Ladies Wicking Mesh Extreme Jersey

- 100% polyester wicking mesh
- 100% polyester dazzle fabric side panels
- Ladies' fit
- Heat sealed label
- V-neck collar

**515** Ladies **RELAXED**  
S-2XL MSRP 19.20

**516** Girls **RELAXED**  
S-L MSRP 18.00



GOLD/  
BLACK/  
WHITE 249  
LIME/  
BLACK/  
WHITE 680  
MAROON/  
GOLD/  
WHITE 390  
NAVY/  
GOLD/  
WHITE 516  
ORANGE/  
BLACK/  
WHITE 322



POWER  
PINK/  
BLACK/  
WHITE 685  
RED/  
BLACK/  
WHITE 110  
ROYAL/  
RED/  
WHITE 115  
WHITE/  
BLACK/  
WHITE 132





## Ladies Wicking Mesh Sleeveless Jersey

- 100% polyester wicking mesh
- Ladies' fit
- Heat sealed label
- V-neck collar

<b>525</b>	<b>Ladies</b>	<b>RELAXED</b>
	S-2XL	MSRP 14.20
<b>526</b>	<b>Girls</b>	<b>RELAXED</b>
	S-L	MSRP 13.60



BLACK 080 COL BLUE 089 D.GREEN 035 GOLD 025 MAROON 045



NAVY 065 ORANGE 029 PINK 104 PURPLE 050



RED 040 ROYAL 060 SIL GREY 016 WHITE 005



RACERBACK



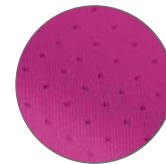
## Ladies Inferno Jersey

- 92% polyester/8% spandex wicking pinhole mesh
- Ladies' fit
- Heat sealed label
- V-neck collar
- Contrast color inserts and piping
- Racerback styling

<b>1290</b>	<b>Ladies</b>	<b>SEMI-FIT</b>
	S-2XL	MSRP 18.60
<b>1291</b>	<b>Girls</b>	<b>SEMI-FIT</b>
	S-L	MSRP 16.50



PINHOLE MESH



BLACK/ GOLD/ WHITE 418 COL. BLUE/ NAVY/ WHITE 614 LIME/ BLACK/ WHITE 680 NAVY/ GOLD/ WHITE 516 ORANGE/ BLACK/ WHITE 322



POWER PINK/ BLACK/ WHITE 456 POWER YELLOW/ BLACK/ WHITE 458 RED/ BLACK/ WHITE 110 ROYAL/ RED/ WHITE 115 WHITE/ BLACK/ WHITE 132



## Ladies Tornado Jersey

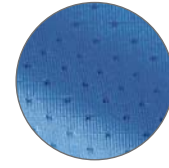
- 92% polyester/8% spandex wicking pinhole mesh
- Ladies' fit
- Heat sealed label
- V-neck collar
- Contrast color inserts

**1355** Ladies **RELAXED**  
S-2XL MSRP 18.60

**1356** Girls **RELAXED**  
S-L MSRP 17.00



PINHOLE MESH



BLACK/  
GOLD/  
WHITE  
418

COL. BLUE/  
NAVY/  
WHITE  
614

LIME/  
BLACK/  
WHITE  
680

NAVY/  
GOLD/  
WHITE  
516

ORANGE/  
BLACK/  
WHITE  
322

POWER PINK/  
BLACK/  
WHITE  
456



PURPLE/  
GOLD/  
WHITE  
615

POWER  
YELLOW/  
BLACK/  
WHITE  
458

RED/  
BLACK/  
WHITE  
110

ROYAL/  
RED/  
WHITE  
115

WHITE/  
BLACK/  
WHITE  
132



## Ladies Storm Jersey

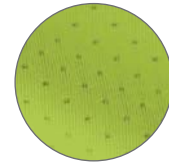
- 92% polyester/8% spandex wicking pinhole mesh
- Ladies' fit
- Heat sealed label
- V-neck collar
- Contrast color piping

**1350** Ladies **RELAXED**  
S-2XL MSRP 15.10

**1351** Girls **RELAXED**  
S-L MSRP 14.00



PINHOLE MESH



BLACK/  
WHITE  
420

COL. BLUE/  
WHITE  
293

LIME/  
BLACK  
530

NAVY/  
WHITE  
301

ORANGE/  
WHITE  
320

POWER  
PINK/  
WHITE  
468



PURPLE/  
WHITE  
450

POWER  
YELLOW/  
BLACK  
457

RED/  
WHITE  
400

ROYAL/  
WHITE  
280

WHITE/  
BLACK  
226



## Ladies Firebolt Jersey

- 100% polyester propelit micromesh wicking knit
- Ladies' fit
- Pad print label
- V-neck collar
- Contrast color piping

**1674 Ladies** **RELAXED**  
S-2XL MSRP 16.50

**1675 Girls** **RELAXED**  
S-L MSRP 14.50



BLACK/  
WHITE  
420

LIME/  
WHITE  
693

NAVY/  
WHITE  
301



POWER PINK/  
WHITE  
468

PURPLE/  
WHITE  
450

RED/  
WHITE  
400



ROYAL/  
WHITE  
280

WHITE/  
BLACK  
226



BACK

1340





BACK



BLACK/  
WHITE  
420

RED/  
WHITE  
400

ROYAL/  
WHITE  
280

NAVY/  
WHITE  
301

LIME/  
SLATE  
V22



SLATE/  
WHITE  
Y49

POWER  
YELLOW/  
SLATE  
Y56

POWER  
BLUE/  
SLATE  
Y54

POWER  
ORANGE/  
SLATE  
Y55



## Ladies Block Out Jersey

- 100% polyester wicking knit
- Ladies' fit
- Pad print label
- V-neck collar
- Contrast color inserts

1714 Ladies **RELAXED**  
S-2XL MSRP 16.50

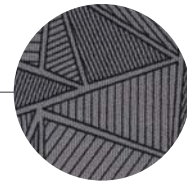


## Ladies Fast Break Racerback Jersey

- 100% polyester wicking knit
- 100% polyester printed wicking knit side panel
- Ladies' fit
- Pad print label
- Self-fabric mitered V-neck collar
- Contrast color printed side panels
- Racerback styling

1722 Ladies **RELAXED**  
S-2XL MSRP 16.50

1723 Girls **RELAXED**  
S-L MSRP 14.50

ULTRA GEO  
PRINT INSERT

BLACK/  
GRAPHITE  
BLACK  
PRINT  
X67

WHITE/  
GRAPHITE  
BLACK  
PRINT  
X70

RED/  
GRAPHITE  
BLACK  
PRINT  
X68



ROYAL/  
GRAPHITE  
BLACK  
PRINT  
X72

NAVY/  
GRAPHITE  
BLACK  
PRINT  
X73

GRAPHITE/  
GRAPHITE  
BLACK  
PRINT  
X69



RACERBACK



## Ladies Winning Streak Racerback Jersey

- 100% polyester wicking knit body
- 92% polyester/8% spandex pinhole mesh inserts
- Ladies' fit
- Heat sealed label
- V-neck collar
- Contrast color stripes
- Racerback styling

**1182** Ladies **RELAXED**  
S-2XL MSRP 18.20

**1183** Girls **RELAXED**  
S-L MSRP 16.10



BLACK/  
WHITE  
420

WHITE/  
WHITE  
230

RED/  
WHITE  
400

ROYAL/  
WHITE  
280

COLUMBIA  
BLUE/  
WHITE  
293

NAVY/  
WHITE  
301

ORANGE/  
WHITE  
320

MAROON/  
WHITE  
380

PURPLE/  
WHITE  
450

DARK  
GREEN/  
WHITE  
438

GRAPHITE/  
WHITE  
R04







WHITE  
005



BLUE GREY  
053



BLACK  
080



### Ladies Shortstop Pant

- Dry-Excel™ 13 ounce 100% polyester double knit
- Ladies' fit
- Low rise, anti-roll elasticized waist with tunnel belt loops
- Two-snap closure
- Zipper fly
- Two contrast set-in double welt back pockets (one on girls)
- Knee length with graded inseam
- Elastic cuffs

**221318 Ladies** **SEMI-FIT**  
S-2XL MSRP 30.20

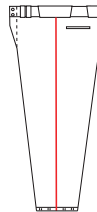
**221418 Girls** **SEMI-FIT**  
S-XL MSRP 29.10



## Custom Braid Options

52 color options

PANT



OPTION 1  
3/16" MSRP: \$10.50  
3/8" MSRP: \$13.00

#### ORDER IN 3 EASY STEPS:

- 1 Select Style
- 2 Select Braid Placement
- 3 Select Braid Color and Size

BACK



## Ladies Spiral Full-Length Softball Pant

- 15 ounce 100% polyester double knit
- Ladies' fit
- Elastic waistband with tunnel belt loops
- Two-snap closure
- Zipper fly
- Two set-in double welt back pockets
- Relaxed fit - full cut with longer inseam
- 32-inch inseam on Ladies' Medium
- Graded inseam
- Reinforced knees
- Open bottom

**315152 Ladies** **RELAXED**  
S-2XL MSRP 34.30

**315153 Girls** **RELAXED**  
S-L MSRP 32.20



BLACK  
080



BLUE GREY  
053



WHITE  
005



## Ladies Arc Softball Pant

- 14 ounce 100% polyester double knit
- Ladies' fit
- Low rise, elastic waistband with inside drawcord
- Two-snap closure
- Zipper fly
- Two set-in double welt back pockets
- Graded inseam
- Contrast color piping
- Reinforced knees
- Elastic cuff

**315122 Ladies** **RELAXED**  
S-2XL MSRP 32.20

**315123 Girls** **RELAXED**  
S-L MSRP 30.20



BLACK/LIME  
499



BLACK/RASBERRY  
494



BLACK/WHITE  
420



SILVER GREY/WHITE  
R04



NAVY/WHITE  
301



WHITE/BLACK  
226



WHITE/SCARLET  
235

## Ladies Piped Prostyle Low-Rise Softball Pant

- 14 ounce 100% polyester double knit
- Ladies' fit
- Elastic waistband with tunnel belt loops
- Two-snap closure
- Zipper fly
- Two set-in double welt back pockets
- Graded inseam
- Contrast color piping
- Reinforced knees
- Elastic cuffs

**315102 Ladies** **RELAXED**  
S-2XL MSRP 34.60

**315103 Girls** **RELAXED**  
S-L MSRP 32.80



BLACK/WHITE  
420



NAVY/WHITE  
301



WHITE/BLACK  
226



BACK



### Ladies Prostyle Low-Rise Softball Pant

- 14 ounce 100% polyester double knit
- Ladies' fit
- Low rise, elastic waistband with inside drawcord
- Tunnel belt loops
- Two-snap closure
- Zipper fly
- Two set-in double welt back pockets
- Graded inseam
- Reinforced knees
- Elastic cuffs

**315052 Ladies** **RELAXED**  
S-2XL MSRP 30.10

**315053 Girls** **RELAXED**  
S-L MSRP 27.50



BLACK  
080

GRAPHITE  
059

NAVY  
065



SILVER GREY  
016

WHITE  
005



## Ladies Unbelted Softball Pant

- 11 ounce 100% polyester double knit
- Ladies' fit
- Low rise, elastic waistband with inside drawcord
- Two-snap closure
- Zipper fly
- Single patch pocket
- Graded inseam
- Reinforced knees
- Elastic cuffs

**315132 Ladies** **RELAXED**  
S-2XL MSRP 22.90

**315133 Girls** **RELAXED**  
S-L MSRP 20.80



BLACK  
080

NAVY  
065

SILVER GREY  
016

WHITE  
005



## Ladies Flex Short

- 100% polyester Essortex wicking fabric
- Ladies' fit
- Pad print label
- Elastic waistband with inside drawcord
- 5-inch inseam
- Girls inseam graded
- Contrast color piping

**315022 Ladies** **RELAXED**  
S-2XL MSRP 15.10

**315023 Girls** **RELAXED**  
S-L MSRP 14.00



ATHLETIC GOLD/WHITE  
596

BLACK/WHITE  
420

COLUMBIA BLUE/WHITE  
293

FOREST/WHITE  
436

LIME/WHITE  
693

MAROON/WHITE  
380

NAVY/WHITE  
301

ORANGE/WHITE  
320

RASPBERRY/WHITE  
514

ROYAL/WHITE  
280

SCARLET/WHITE  
408

TEAL/WHITE  
331



INSIDE MESH BACK



### Ladies Low Rise Collegiate Pant

- 15 ounce 100% polyester double knit with inner mesh layer
- Ladies' fit
- Low rise, elastic waistband with inside drawcord
- Tunnel belt loops
- Two-snap closure
- Zipper fly
- Two set-in double welt back pockets
- Graded inseam
- 3/8" two-color braid on side seam
- Reinforced knees
- Elastic cuffs

**1248** Ladies **FITTED**  
S-2XL MSRP 37.30

**1249** Girls **FITTED**  
S-L MSRP 35.30



BLACK/LIME/WHITE 113  
BLACK/POWER PINK/WHITE 483  
BLACK/RED/WHITE 527  
WHITE/BLACK/GOLD 375  
WHITE/BLACK/WHITE 132



WHITE/NAVY/GOLD 506  
WHITE/NAVY/WHITE 138  
WHITE/RED/WHITE 136  
WHITE/ROYAL/WHITE 137

### Ladies Low Rise Homerun Pant

- 14 ounce 100% polyester double knit
- Ladies' fit
- Low rise, elastic waistband with inside drawcord
- Tunnel belt loops
- Two-snap closure
- Zipper fly
- Two set-in double welt back pockets
- Graded inseam
- Reinforced knees
- Elastic cuffs

**1240** Ladies **FITTED**  
XS-3XL MSRP 31.10

**1241** Girls **FITTED**  
S-L MSRP 29.00

AVAILABLE IN 3XL



BLACK 080  
NAVY 065  
SILVER GREY 016  
WHITE 005

### Ladies Low Rise Softball Pant

- 14 ounce 100% polyester double knit
- Ladies' fit
- Low rise, elastic waistband with inside drawcord
- Two-snap closure
- Zipper fly
- Two set-in double welt back pockets (one on girls)
- Graded inseam
- Reinforced knees
- Elastic cuffs

**828** Ladies **FITTED**  
S-2XL MSRP 29.00

**829** Girls **FITTED**  
S-L MSRP 26.90



BLACK 080  
ROYAL 060  
NAVY 065  
SILVER GREY 016





### Ladies Outfield Pant

- 14 ounce 100% polyester double knit
- Ladies' fit
- Low rise, elastic waistband with inside drawcord
- Tunnel belt loops
- Two-snap closure
- Zipper fly
- Two set-in double welt back pockets
- Full Length
- 32-inch inseam on Ladies Medium
- Graded Inseam
- Contrast color inserts and piping
- Reinforced knees
- Open bottom

**1242 Ladies** **FITTED**  
S-2XL MSRP 33.20

**1243 Girls** **FITTED**  
S-L MSRP 31.10



BLACK/BLACK/WHITE 529  
BLACK/LIME/WHITE 113  
BLACK/POWER/PINK/WHITE 483  
BLACK/POWER/YELLOW/WHITE 482  
BLACK/RED/WHITE 527  
BLACK/GRAPHITE/WHITE 489

### Ladies Low Rise Drive Pant

- 14 ounce 100% polyester double knit
- Ladies' fit
- Low rise, elastic waistband with inside drawcord
- Two-snap closure
- Zipper fly
- Two set-in double welt back pockets
- Knee length with graded inseam
- Contrast color inserts and piping
- Reinforced knees
- Elastic cuffs

**1245 Ladies** **FITTED**  
S-2XL MSRP 28.30

**1246 Girls** **FITTED**  
S-L MSRP 26.20



BLACK/BLACK 425  
BLACK/WHITE 420  
NAVY/WHITE 301  
RED/WHITE 400  
ROYAL/WHITE 280  
SILVER GREY/SILVER GREY 477

### Ladies Comet Pant

- 14 ounce 100% polyester double knit
- 90% polyester/10% spandex insert
- Ladies' fit
- Low rise, elastic waistband with inside drawcord
- Tunnel belt loops
- Two-snap closure
- Zipper fly
- Knee length with graded inseam
- Contrast color inserts
- Reinforced knees
- Elastic cuffs

**1340 Ladies** **FITTED**  
S-2XL MSRP 31.10

**1341 Girls** **FITTED**  
S-L MSRP 29.00



BLACK/GOLD/WHITE 418  
BLACK/LIME/WHITE 113  
BLACK/ORANGE/WHITE 611  
BLACK/POWER/PINK/WHITE 483  
BLACK/RED/WHITE 527



BLACK/GRAPHITE/WHITE 489  
NAVY/GOLD/WHITE 516  
RED/BLACK/WHITE 110  
ROYAL/RED/WHITE 115



### Ladies Inferno Short

- 92% polyester/8% spandex pinhole mesh
- Ladies' fit
- Pad print label
- Covered elastic waistband with inside drawcord
- 5-inch inseam
- Girls inseam graded

**1292** Ladies **RELAXED**  
S-2XL MSRP 14.50

**1293** Girls **RELAXED**  
S-L MSRP 13.60



BLACK 080 COL. BLUE 089 GRAPHITE 059 LIME 096



NAVY 065 ORANGE 029 POWER PINK 809



POWER YELLOW 810 RED 040 ROYAL 060

### Ladies Tricot Mesh Short/Tricot Lined

- Outer layer of 100% polyester tricot mesh
- Inner layer of 100% polyester tricot lining
- Ladies' fit
- Covered elastic waistband with inside drawcord
- 5-inch inseam
- Girls inseam graded

**858** Ladies **RELAXED**  
S-2XL MSRP 11.40

**859** Girls **RELAXED**  
S-L MSRP 10.30



BLACK 080 DARK GREEN 035 MAROON 045



NAVY 065 RED 040 ROYAL 060



BACK YOKE



### Ladies Shockwave Short

- 100% polyester propelit micromesh
- Ladies' fit
- Pad print label
- Covered elastic waistband with inside drawcord
- 5-inch inseam
- Girls inseam graded
- Contrast color piping on back yoke

962 Ladies **RELAXED**  
S-2XL MSRP 18.60

963 Girls **RELAXED**  
S-L MSRP 16.50



BLACK/WHITE 420  
 GRAPHITE/WHITE R04  
 LIME/WHITE 693  
 NAVY/WHITE 301



POWER PINK/WHITE 468  
 RED/WHITE 400  
 ROYAL/WHITE 280



### Ladies Octane Short

- 100% polyester wicking knit
- Ladies' fit
- Pad print label
- Covered elastic waistband with inside drawcord
- 7-inch inseam
- Girls inseam graded

1423 Ladies **RELAXED**  
S-2XL Call for Price

1424 Girls **RELAXED**  
S-L Call for Price



BLACK 080  
 DARK GREEN 035  
 GRAPHITE 059  
 LIME 096



MAROON 045  
 NAVY 065  
 POWER PINK 809  
 PURPLE 050



RED 040  
 ROYAL 060  
 SILVER 099

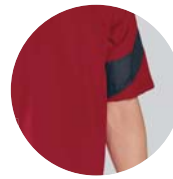




### Pitch Pullover

- Ultra-lightweight Aero-Tec™ fabric provides both weather protection and zero noise, without the bulk with tech print pattern
- Tech print patten detail on lower sleeve and inserts
- Quarter zip pullover style
- Zip-off removeable sleeves at elbows
- Front pockets
- Spandex bound cuff
- Adjustable bottom hem with hidden shockcord closure in right pocket

**229194 Adult** **RELAXED**  
S-3XL MSRP 60.30



ZIP-OFF SLEEVES



CARBON PRINT/  
BLACK  
H05

CARBON PRINT/  
NAVY  
H03

CARBON PRINT/  
ROYAL  
H02



CARBON PRINT/  
SCARLET  
H01

CARBON PRINT/  
WHITE  
H04



### Equalizer Pullover

- Ultra-lightweight Aero-Tec™ fabric provides both weather protection and zero noise, without the bulk \* Dry-Excel™ Pin-Dot performance knit, polyester with wicking and soil-release properties
- Half-zip pullover style
- Contrast color inserts
- Raglan sleeves
- Front pockets
- Open bottom with shockcord at bottom on Adult

**222485 Adult** **RELAXED**  
S-3XL MSRP 43.70

**222285 Youth** **RELAXED**  
S-XL MSRP 40.60



BACK

TEMPLATE  
H3

BREATHABLE  
MESH INSERT

FRONT  
POCKET



BLACK/  
BLACK  
425

BLACK/  
ORANGE  
423

BLACK/  
SCARLET  
500



BLACK/  
WHITE  
420

FOREST/  
WHITE  
436

GRAPHITE/  
WHITE  
R04



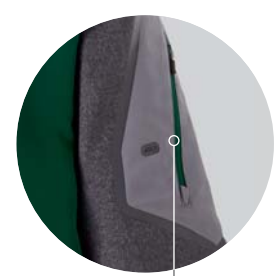
NAVY/  
WHITE  
301

ROYAL/  
WHITE  
280

SCARLET/  
WHITE  
408



BACK



SILICONE WELDED, LASER CUT SLEEVE POCKET WITH MEDIA PORT

¼ ZIP NECKLINE

TEMPLATE U3



FRONT POUCH POCKET



### Raider Pullover Short Sleeve

- Ultra-lightweight Aero-Tec™ fabric provides both weather protection and zero noise, without the bulk
- Tech print patten detail on sleeve with pocket and media port
- Quarter zip pullover style
- Sleeve pocket with silver media port with silicone welded zipper
- Set-in sleeves
- Front pouch pocket
- Open bottom

**229545 Adult** **RELAXED**  
XS-3XL MSRP 47.80  
**Select Colors 4XL\***

**229645 Youth** **RELAXED**  
S-XL MSRP 44.70  
**Select Colors\***

AVAILABLE IN ADULT 4XL & YOUTH

AVAILABLE IN ADULT ONLY



CARBON PRINT/BLACK  
H05\*

CARBON PRINT/NAVY  
H03\*

CARBON PRINT/ROYAL  
H02\*

CARBON PRINT/SCARLET  
H01\*

CARBON PRINT/WHITE  
H04\*

CARBON PRINT/FOREST  
H69

CARBON PRINT/GRAPHITE  
H60

CARBON PRINT/MAROON  
H06

CARBON PRINT/ORANGE  
H07

CARBON PRINT/PURPLE  
H68



## Bionic Quarter Zip Pullover

- Micron™ lightweight polyester
- Sleeves and arms are embossed with the Screenmesh print
- Jersey and taffeta lining for added warmth
- Quarter zip pullover style with shiny coated zipper
- Front pockets
- Elastic cuffs
- Open bottom with adjustable elastic hidden drawcord on Adult only

**229027 Adult** **RELAXED**  
S-3XL MSRP 46.80  
**Select Colors 4XL**

**229227 Youth** **RELAXED**  
S-XL MSRP 44.70



## Bionic Windshirt

- Micron™ lightweight polyester
- Sleeves and arms are embossed with the Screenmesh print
- Jersey and taffeta lining for added warmth
- V-neck collar
- Contrast color inserts and piping
- Raglan sleeves
- Front pockets
- Elastic cuffs
- Open bottom with adjustable elastic hidden drawcord on Adult only

**229019 Adult** **RELAXED**  
S-3XL MSRP 44.70

**229219 Youth** **RELAXED**  
S-XL MSRP 41.60







BACK



TEMPLATE SP134

### Ladies Ration Hoodie

- 9 ounce 60% cotton/40% polyester athletic fleece
- Ladies' fit
- Hood with drawcord
- Contrast color bottom panel and arms
- Set-in sleeves
- Front pouch pocket
- Rib-knit cuffs and bottom band

**229378 Ladies** **RELAXED**  
XS-3XL MSRP 36.40



BLACK/  
CHARCOAL  
HEATHER  
428

BRIGHT  
YELLOW/  
CHARCOAL  
HEATHER  
E33

FOREST/  
CHARCOAL  
HEATHER  
E32

MAROON/  
CHARCOAL  
HEATHER  
378

NAVY/  
CHARCOAL  
HEATHER  
309

ORANGE/  
CHARCOAL  
HEATHER  
E36

PURPLE/  
CHARCOAL  
HEATHER  
E34

ROYAL/  
CHARCOAL  
HEATHER  
287

SCARLET/  
CHARCOAL  
HEATHER  
T27

WHITE/  
CHARCOAL  
HEATHER  
E31



PINHOLE MESH INSERTS

## Doppler Pullover

- 90% polyester/10% spandex 4-way stretch woven fabric
- 100% polyester pinhole mesh inserts
- 4-way stretch property provides ease of movement
- Half-zip pullover style
- Contrasting color inserts
- Contrast color mesh shoulder stripe and underarm insert
- Mesh underarm provides ventilation
- Raglan sleeves
- Front pockets with contrasting color mesh pocket bag
- Half-elastic cuffs
- Open bottom with adjustable elastic hidden drawcord



OPEN BOTTOM WITH ADJUSTABLE ELASTIC DRAWCORD HIDDEN IN POCKET

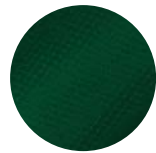


BLACK/RED 424    BLACK/ORANGE 423    BLACK/GOLD 421    BLACK/GRAPHITE R17    RED/GRAPHITE 825



ROYAL/GRAPHITE S65    NAVY/GRAPHITE S21    NAVY/RED 307    PURPLE/GRAPHITE D46

**3792**    **Adult**    **RELAXED**  
S-2XL    MSRP 45.70



DIAMOND TECH



## Roar Pullover

- Outer shell of 100% polyester diamond tech
- Lined with 100% polyester taffeta
- V-neck collar
- Contrast color inserts and piping
- Set-in sleeves
- Front pockets
- Elastic cuffs
- Open bottom with adjustable elastic hidden drawcord



BLACK/RED/WHITE 527    BLACK/ORANGE/WHITE 611    BLACK/GOLD/WHITE 418    BLACK/GRAPHITE/WHITE 489



RED/BLACK/WHITE 110    ROYAL/RED/WHITE 115    ROYAL/GOLD/WHITE 613    NAVY/RED/WHITE 518



NAVY/ORANGE/WHITE S29    NAVY/GRAPHITE/WHITE 371    MAROON/GRAPHITE/WHITE 393    PURPLE/GOLD/WHITE 615



DARK GREEN/GRAPHITE/WHITE 646    GRAPHITE/NAVY/WHITE 212    GRAPHITE/RED/WHITE 213    GRAPHITE/BLACK/WHITE 195

**3745**    **Adult**    **RELAXED**  
S-4XL    MSRP 40.00

**3746**    **Youth**    **RELAXED**  
S-L    MSRP 38.00



BACK

6282



### Edge Pullover

- 100% polyester performance wicking fleece
- Crew neck with front detail
- Contrast color three-needle stitching accent on shoulders, sleeves, and body
- Set-in sleeves
- Double-needle hemmed sleeves and curved bottom

**5542**    **Adult**    **RELAXED**  
S-3XL    MSRP 32.20

**5543**    **Youth**    **RELAXED**  
S-L    MSRP 30.20



BLACK/  
WHITE  
420

RED/  
WHITE  
400

ROYAL/  
WHITE  
280



NAVY/  
WHITE  
301

GRAPHITE/  
WHITE  
R04



BACK

6204



### Mod Camo Hoody

- 100% polyester performance wicking fleece
- 100% polyester printed wicking knit side inserts, piping, and hood lining features Mod Camo print
- Roller printed for easy embellishment reduces chance of dye migration
- Drawcord on Adult sizes only
- Raglan sleeves
- Front pocket with an interior kangaroo pocket
- Self-fabric cuffs
- Open bottom

**5538**    **Adult**    **RELAXED**  
S-3XL    MSRP 41.50

**5539**    **Youth**    **RELAXED**  
M-L    MSRP 37.30



BLACK/  
BLACK  
MOD  
X81

RED/  
RED  
MOD  
X88

ROYAL/  
ROYAL  
MOD  
X58

NAVY/  
NAVY  
MOD  
X59



ORANGE/  
ORANGE  
MOD  
X83

MAROON/  
MAROON  
MOD  
X92

DARK  
GREEN/  
DARK  
GREEN  
MOD  
X84

GRAPHITE/  
BLACK  
MOD  
X82

### Sport Twill Visor

- 100% cotton twill
- Three panels
- Pre-curved bill
- Adjustable self-fabric straps with hook and loop fastener
- Sweatband folds down for easy embellishment



**319760 Adult** Call for Price  
One Size

**319761 Youth** Call for Price  
One Size



ATHLETIC GOLD 595	BLACK 080	COLUMBIA BLUE 089	FOREST 038	KELLY 030	LIME 096	MAROON 045	NAVY 065	ORANGE 029	PURPLE 050	RASPBERRY 047	ROYAL 060	SCARLET 083	WHITE 005
-------------------------	--------------	-------------------------	---------------	--------------	-------------	---------------	-------------	---------------	---------------	------------------	--------------	----------------	--------------

### Cotton Twill Six-Panel Cap

- 100% cotton twill
- Fused buckram-backed front panels
- Low profile pro-style crown
- Matching sewn eyelets
- Pre-curved bill
- Plastic snaps size adjuster



**319700 Adult** Call for Price  
One Size

**319701 Youth** Call for Price  
One Size



ATHLETIC GOLD 595	BLACK 080	BLACK/ ORANGE 423	BLACK/ SCARLET 500	FOREST 038	KELLY 030	MAROON 045	NAVY 065	NAVY/ SCARLET S20	ORANGE 029	PURPLE 050	ROYAL 060	ROYAL/ SCARLET W81	SCARLET 083	SCARLET/ BLACK 406	S. GREY/ BLACK 470	WHITE 005
-------------------------	--------------	-------------------------	--------------------------	---------------	--------------	---------------	-------------	-------------------------	---------------	---------------	--------------	--------------------------	----------------	--------------------------	--------------------------	--------------





## Flexfit Bill Cap

- 84% nylon/14% cotton/2% spandex
- Six panels
- Mid profile pro-style crown
- Matching sewn eyelets
- Flat bill
- Patented Flexfit stretch for comfortable fit

**6314 Adult** Call for Price  
S/M, L/XL

**6315 Youth** Call for Price



BLACK 080    COLUMBIA BLUE 089    DARK GREEN 035    MAROON 045    NAVY 065    ORANGE 029    PURPLE 050    RED 040    ROYAL 060    SILVER GREY 016    WHITE 005

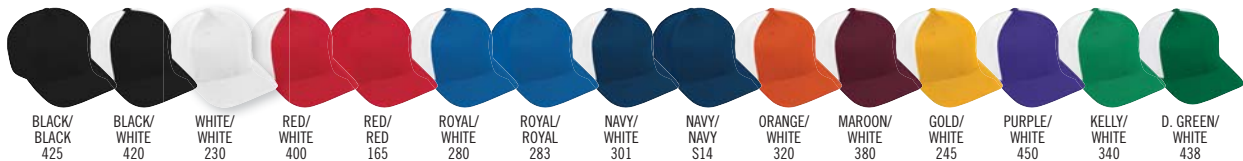


## Flexfit Vapor Cap

- 84% nylon/14% cotton/2% spandex
- Twill front panel with airmesh sides and back
- Six panels
- Mid profile pro-style crown
- Matching sewn eyelets
- Pre-curved bill
- Patented Flexfit stretch for comfortable fit

**6300 Adult** Call for Price  
S/M (6<sup>3</sup>/<sub>8</sub> - 7<sup>1</sup>/<sub>4</sub>)  
L/XL (7<sup>1</sup>/<sub>8</sub> - 7<sup>5</sup>/<sub>8</sub>)

**6301 Youth** Call for Price  
(6<sup>1</sup>/<sub>2</sub> - 7)



BLACK/BLACK 425    BLACK/WHITE 420    WHITE/WHITE 230    RED/WHITE 400    RED/RED 165    ROYAL/WHITE 280    ROYAL/ROYAL 283    NAVY/WHITE 301    NAVY/NAVY 314    ORANGE/WHITE 320    MAROON/WHITE 380    GOLD/WHITE 245    PURPLE/WHITE 450    KELLY/WHITE 340    D. GREEN/WHITE 438



### Flexfit Contender Cap

- 97% polyester/3% spandex wicking stretch mesh
- Wicks moisture
- Six panels
- Contrast color front two panels and bill
- White back and side panels and inserts on bill
- Low profile pro-style crown
- Matching sewn eyelets
- Pre-curved bill
- Patented Flexfit stretch for comfortable fit



**6305 Adult** Call for Price  
 S/M (6¾ - 7¼)  
 L/XL (7½ - 7¾)

**6306 Youth** Call for Price  
 (6½ - 7)



BLACK/  
WHITE  
420

RED/  
WHITE  
400

NAVY/  
WHITE  
301

GRAPHITE/  
WHITE  
305



### Flexfit Zone Cap

- 97% polyester/3% spandex wicking stretch mesh
- Wicks moisture
- Six panels
- Low profile pro-style crown
- Matching sewn eyelets
- Pre-curved bill
- Patented Flexfit stretch for comfortable fit
- Contrast color triangular side inserts



**6310 Adult** Call for Price  
 S/M (6¾ - 7¼)  
 L/XL (7½ - 7¾)

**6311 Youth** Call for Price  
 (6½ - 7)



BLACK/  
WHITE  
420

BLACK/  
GOLD  
421

BLACK/  
VEGAS  
GOLD  
255

RED/  
BLACK  
407

RED/  
WHITE  
400

ROYAL/  
WHITE  
280

ROYAL/  
ORANGE  
284

ROYAL/  
GOLD  
281

COLUMBIA  
BLUE/  
WHITE  
293

NAVY/  
WHITE  
301

NAVY/  
GOLD  
302

ORANGE/  
WHITE  
320

MAROON/  
WHITE  
380

PURPLE/  
WHITE  
450

PURPLE/  
GOLD  
495

KELLY/  
WHITE  
340

DARK  
GREEN/  
WHITE  
438

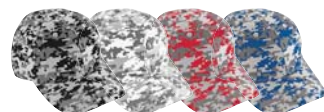
DARK  
GREEN/  
GOLD  
442

VEGAS  
GOLD/  
WHITE  
250

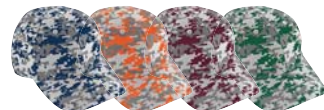
GRAPHITE/  
WHITE  
R04

### Digi Camo Cotton Twill Cap

- 100% cotton twill with Digi Camo print
- Six panels
- Fused buckram-backed front panels
- Low profile pro-style crown
- Graphite sewn eyelets
- Pre-curved bill
- Hook and loop fastener



BLACK DIGI 01G  
 WHITE DIGI 13G  
 RED DIGI 10G  
 ROYAL DIGI 11G



NAVY DIGI 05G  
 ORANGE DIGI 06G  
 MAROON DIGI 04G  
 DARK GREEN DIGI 03G

**6208**    **Adult**    Call for Price  
 One Size

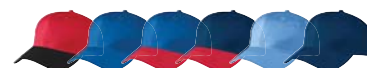
**6209**    **Youth**    Call for Price  
 One Size

### Six-Panel Cotton Twill Low-Profile Cap

- 100% cotton twill
- Six panels
- Fused buckram-backed front panels
- Low profile pro-style crown
- Matching sewn eyelets
- Pre-curved bill
- Plastic snaps size adjuster



BLACK 080    BLACK/RED 424    BLACK/ORANGE 423    BLACK/GOLD 421    WHITE 005    RED 040



RED/BLACK 407    ROYAL 060    ROYAL/RED 285    NAVY/RED 307    COL. BLUE 089    NAVY 065



ORANGE 029    MAROON 045    GOLD 025    PURPLE 050    PURPLE/GOLD 495    KELLY 030



DARK GREEN 035    D. GREEN/GOLD 442    LIGHT PINK 095    TEAL 063    SIL. GREY/BLACK 470    SIL. GREY/NAVY 511

**6204**    **Adult**    Call for Price  
 One Size

**6206**    **Youth**    Call for Price  
 One Size

### Five-Panel Cotton Twill Cap

- 100% cotton twill
- Five panels
- Fused buckram-backed front panels
- Low profile pro-style crown
- Matching sewn eyelets
- Plastic snaps size adjuster



BLACK 080    WHITE 005    RED 040    ROYAL 060



NAVY 065    ORANGE 029    MAROON 045    GOLD 025



PURPLE 050    KELLY 030    DARK GREEN 035

**6202**    **Adult**    Call for Price  
 One Size

**6207**    **Youth**    Call for Price  
 One Size

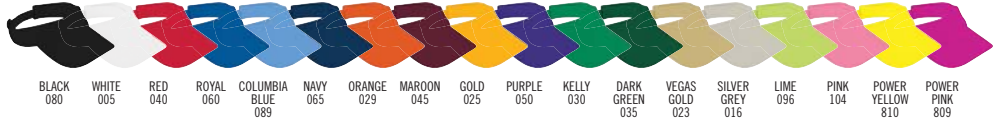
### Athletic Mesh Visor

- 100% polyester athletic mesh with tricot backing
- Three panels
- Pre-curved bill
- Hook and loop fastener
- Sweatband folds down for easy embellishment



**6227 Adult** Call for Price  
One Size

**6228 Youth** Call for Price  
One Size



### Sport Flex Athletic Mesh Cap

- 100% polyester athletic mesh with tricot backing
- Six panels
- Fused buckram-backed front panels
- Low profile pro-style crown
- Matching sewn eyelets
- Pre-curved bill with contrast grey undervisor
- Unique design allows cap to stretch for comfortable fit



**6232 Adult** Call for Price

S/M (6¾ - 7¼)  
L/XL (7¼ - 7¾)  
L/XL (6½ - 6¾)

**6233 Youth** Call for Price  
(6½ - 7)



### Athletic Mesh Cap

- 100% polyester athletic mesh with tricot backing
- Six panels
- Fused buckram-backed front panels
- Low profile pro-style crown
- Matching sewn eyelets
- Pre-curved bill with contrast grey undervisor
- Hook and loop fastener



**6235 Adult** Call for Price  
One Size

**6236 Youth** Call for Price  
One Size



### Athletic Mesh Flat Bill Cap

- 100% polyester athletic mesh with tricot backing
- Six panels
- Fused buckram-backed front panels
- Mid to low profile pro-style crown
- Matching sewn eyelets
- Flat bill
- Plastic snaps size adjuster



FLAT BILL DESIGN

**6255 Adult** Call for Price  
One Size

**6256 Youth** Call for Price  
One Size





### Slider Cap

- 100% polyester athletic mesh with tricot backing
- Six panels
- Fused buckram-backed front panels
- Low profile pro-style crown
- Matching sewn eyelets
- Pre-curved bill
- Hook and loop fastener
- Contrast color inserts



**6282 Adult** Call for Price

**6283 Youth** Call for Price



- BLACK/ORANGE/WHITE 611
- BLACK/GOLD/WHITE 418
- BLACK/LIME/WHITE 113
- BLACK/GRAPHITE/WHITE 489
- RED/BLACK/WHITE 110
- ROYAL/BLACK/WHITE 526
- ROYAL/RED/WHITE 115
- ROYAL/GOLD/WHITE 613
- NAVY/GOLD/WHITE 516
- NAVY/GRAPHITE/WHITE 371
- MAROON/BLACK/WHITE 524
- PURPLE/BLACK/WHITE 497
- D.GREEN/BLACK/WHITE 520

### Change Up Cap

- 100% polyester athletic mesh with tricot backing
- Six panels
- Fused buckram-backed front panels
- Low profile pro-style crown
- Matching sewn eyelets
- Pre-curved bill
- Hook and loop fastener
- Contrast color inserts



**6290 Adult** Call for Price

**6291 Youth** Call for Price



- BLACK/BLACK/WHITE 529
- BLACK/BLACK/LIME 357
- BLACK/BLACK/SIL GREY 356
- BLACK/ORANGE/WHITE 611
- BLACK/GOLD/WHITE 418
- BLACK/RED/WHITE 527
- RED/RED/WHITE W99
- ROYAL/ROYAL/WHITE W78
- ROYAL/RED/WHITE 115
- ROYAL/GOLD/WHITE 613
- NAVY/NAVY/WHITE U24
- NAVY/RED/WHITE 518
- NAVY/GOLD/WHITE 516
- ORANGE/ORANGE/WHITE W63
- MAROON/MAROON/WHITE U08
- PURPLE/PURPLE/WHITE X39
- D.GREEN/D.GREEN/WHITE W24
- GRAPHITE/GRAPHITE/WHITE X50



### Sport Flex Color Block Athletic Mesh Cap

- 100% polyester athletic mesh with tricot backing
- Unique, comfortable stretch fit
- Six panels
- Low profile pro-style crown
- Fused buckram-backed front panels
- Contrasting color side insert and bill edge
- Matching eyelets
- Two-color pre-curved bill with contrast grey undervisor



**6234 Adult** Call for Price

S/M (6¼ - 7½)

L/XL (7¼ - 7¾)



- BLACK/WHITE 420
- RED/WHITE 400
- ROYAL/WHITE 280
- COL. BLUE/WHITE 293
- NAVY/WHITE 301
- ORANGE/WHITE 320
- MAROON/WHITE 380
- GOLD/WHITE 245
- PURPLE/WHITE 450
- D. GREEN/WHITE 438

### Force Cap

- 100% polyester athletic mesh with tricot backing
- Six panels
- Fused buckram-backed front panels
- Low profile pro-style crown
- Matching sewn eyelets
- Pre-curved bill
- Hook and loop fastener
- Contrast color inserts and piping

**6280 Adult** Call for Price  
**6281 Youth** Call for Price

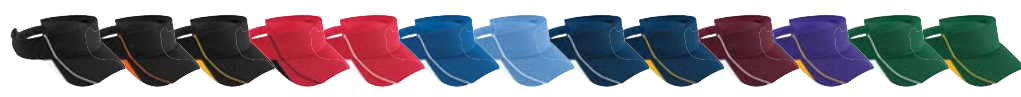


BLACK/WHITE 420    RED/WHITE 400    ROYAL/WHITE 280    NAVY/WHITE 301    ORANGE/WHITE 320    MAROON/WHITE 380    PURPLE/WHITE 450    DARK GREEN/WHITE 438

### Force Visor

- 100% polyester athletic mesh with tricot backing
- Three panels
- Pre-curved bill
- Hook and loop fastener
- Contrast color inserts and piping
- Sweatband folds down for easy embellishment

**6285 Adult** Call for Price  
**6286 Youth** Call for Price



BLACK/WHITE 420    BLACK/ORANGE 423    BLACK/GOLD 421    RED/BLACK 407    RED/WHITE 400    ROYAL/WHITE 280    COLUMBIA BLUE/WHITE 293    NAVY/WHITE 301    NAVY/GOLD 302    MAROON/WHITE 380    PURPLE/GOLD 495    DARK GREEN/WHITE 438    DARK GREEN/GOLD 442



### Sport Flex Three-Color Athletic Mesh Cap

- 100% polyester athletic mesh with tricot backing
- Six panels
- Fused buckram-backed front panels
- Low profile pro-style crown
- Matching sewn eyelets
- Pre-curved bill with contrast grey undervisor
- Unique design allows cap to stretch for comfortable fit
- Contrast color inserts

**6247 Adult** Call for Price  
 S/M (6¾ - 7⅝)  
 L/XL (7¼ - 7⅞)



RED/BLACK/WHITE 110    RED/NAVY/WHITE 537    ROYAL/BLACK/WHITE 526    ORANGE/BLACK/WHITE 322    MAROON/BLACK/WHITE 524    GOLD/BLACK/WHITE 249    PURPLE/BLACK/WHITE 497    D. GREEN/BLACK/WHITE 520



## Adjustable Wicking Mesh Edge Cap

- 100% polyester textured wicking fabric
- White dazzle inserts
- Wicks moisture
- Six panels
- Fused buckram-backed front panels
- Low profile pro-style crown
- Matching sewn eyelets
- Pre-curved bill
- Hook and loop fastener



**6270 Adult** Call for Price

**6271 Youth** Call for Price



## Adjustable Wicking Mesh Edge Visor

- 100% polyester textured wicking fabric
- White dazzle inserts
- Wicks moisture
- Three panels
- Pre-curved bill
- Hook and loop fastener
- Sweatband folds down for easy embellishment



**6275 Adult** Call for Price

**6276 Youth** Call for Price



## Adjustable Wicking Mesh Cap

- 100% polyester textured wicking fabric
- Wicks moisture
- Six panels
- Fused buckram-backed front panels
- Low profile pro-style crown
- Matching sewn eyelets
- Pre-curved bill
- Hook and loop fastener



**6265 Adult** Call for Price

**6266 Youth** Call for Price



## Adjustable Wicking Mesh Visor

- 100% polyester textured wicking fabric
- Wicks moisture
- Three panels
- Pre-curved bill
- Hook and loop fastener
- Sweatband folds down for easy embellishment



**6267 Adult** Call for Price

**6268 Youth** Call for Price



## Athletic Mesh Two-Color Visor

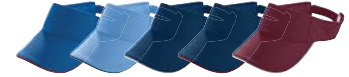
- 100% polyester athletic mesh with tricot backing
- Three panels
- Pre-curved bill
- Hook and loop fastener
- Contrast color piping
- Sweatband folds down for easy embellishment

**6223**    **Adult**    Call for Price

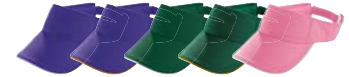
**6224**    **Youth**    Call for Price



BLACK/WHITE 420  
BLACK/GOLD 421  
RED/BLACK 407  
RED/WHITE 400  
ROYAL/WHITE 280



ROYAL/RED 285  
C.BLUE/NAVY 294  
NAVY/WHITE 301  
NAVY/RED 307  
MAROON/WHITE 380



PURPLE/WHITE 450  
PURPLE/GOLD 495  
D.GREEN/WHITE 438  
D.GREEN/GOLD 442  
PINK/WHITE 453

## Adjustable Wicking Mesh Two-Color Visor

- 100% polyester textured wicking fabric
- Wicks moisture
- Three panels
- Pre-curved bill
- Hook and loop fastener
- Contrast color inserts
- Sweatband folds down for easy embellishment

**6260**    **Adult**    Call for Price

**6261**    **Youth**    Call for Price



BLACK/WHITE 420  
WHITE/BLACK 226  
RED/WHITE 400  
ROYAL/WHITE 280  
NAVY/WHITE 301



ORANGE/WHITE 320  
MAROON/WHITE 380  
GOLD/WHITE 245  
PURPLE/WHITE 450  
D.GREEN/WHITE 438

## Sport Twill Visor

- 100% cotton twill
- Three panels
- Pre-curved bill
- Hook and loop fastener
- Sweatband folds down for easy embellishment

**6225**    **Adult**    Call for Price

**6226**    **Youth**    Call for Price



BLACK 080  
WHITE 005  
RED 040  
ROYAL 060  
COLUMBIA BLUE 089  
NAVY 065



ORANGE 029  
MAROON 045  
GOLD 025  
PURPLE 050  
KELLY 030  
DARK GREEN 035



LIGHT PINK 095  
SILVER GREY 016  
TEAL 063  
BROWN 079  
KHAKE 010





### Compete Sock (Holloway)

### Elite Multi-Sport Sock (Augusta Sportswear)

- 75% acrylic/15% polyester/ 4% spandex/4% elastic/2% nylon
- Wicks moisture
- Knee length
- Heel/toe construction
- Arch and ankle support
- Lightweight microfiber yarns offer support while remaining soft to the touch

Call for Price



HOLLOWAY

### 223811 Adult 10-13, Intermediate 9-11, Youth 7-9



VEGAS GOLD 023    BLACK 080    WHITE 005    SCARLET 083    ROYAL 060    UNIVERSITY BLUE 048    NAVY 065    ORANGE 029    MAROON 045    LT GOLD 178    PURPLE 050    FOREST 038    LIME 096    BRIGHT YELLOW 150    POWER PINK 809    CARDINAL J36    KELLY 030

AUGUSTA SPORTSWEAR

### 6007 Adult 10-13    6006 Intermediate 9-11    6005 Youth 7-9



VEGAS GOLD 023    BLACK 080    WHITE 005    RED 040    ROYAL 060    COLUMBIA BLUE 089    NAVY 065    ORANGE 029    MAROON 045    GOLD 025    PURPLE 050    DARK GREEN 035    LIME 096    POWER YELLOW 810    POWER PINK 809    GRAPHITE 059

### Athletic Sock (High Five)

### Athletic Socks (Augusta Sportswear)

- 80% acrylic, 14% nylon, 6% elastic
- Knee-length tube sock
- Fully cushioned foot

Call for Price



HIGH FIVE

### 328030 X-Small (15"), Small (18"), Medium (24"), Large (30")



BLACK 080    FOREST 038    MAROON 045    SCARLET 083    ROYAL 060    NAVY 065    ORANGE 029    RASPBERRY 047    POWER YELLOW 810    PURPLE 050    ATHLETIC GOLD 595    GRAPHITE 059    KELLY 030    LIME 096    COLUMBIA BLUE 089    WHITE 005    POWER BLUE 812

AUGUSTA SPORTSWEAR

### 6028 Adult 10-13    6026 Intermediate 9-11    6027 Youth 7-9



BLACK 080    DARK GREEN 035    MAROON 045    RED 040    ROYAL 060    NAVY 065    ORANGE 029    POWER PINK 809    POWER YELLOW 810    PURPLE 050    GOLD 025    GRAPHITE 059    KELLY 030    LIME 096    COLUMBIA BLUE 089    WHITE 005    SILVER GREY 016    TEAL 063    VEGAS GOLD 023

**Stirrup Sock (High Five)**  
**Baseball Stirrup Socks (Augusta Sportswear)**

- 43% polyester/35% cotton/16% acrylic/6% elastic
- Knee-length two-in-one stirrup sock
- White sock with color stripe knitted-in
- Cushioned toe, sole and heel
- Adult has knit-in heel and toe
- Intermediate and Youth are tube socks

Call for Price



HIGH FIVE

**319800** Small (15"), Medium (19"), Large (24")



- |                        |                          |                        |                       |                         |
|------------------------|--------------------------|------------------------|-----------------------|-------------------------|
| WHITE/<br>BLACK<br>226 | WHITE/<br>SCARLET<br>235 | WHITE/<br>ROYAL<br>220 | WHITE/<br>NAVY<br>221 | WHITE/<br>FOREST<br>223 |
|------------------------|--------------------------|------------------------|-----------------------|-------------------------|

AUGUSTA SPORTSWEAR

**6015** Adult 10-13    **6010** Intermediate 9-11    **6011** Youth 7-9



- |                        |                      |                        |                       |                                |                         |                         |                                |                       |                          |                        |                                 |                       |
|------------------------|----------------------|------------------------|-----------------------|--------------------------------|-------------------------|-------------------------|--------------------------------|-----------------------|--------------------------|------------------------|---------------------------------|-----------------------|
| WHITE/<br>BLACK<br>080 | WHITE/<br>RED<br>040 | WHITE/<br>ROYAL<br>060 | WHITE/<br>NAVY<br>065 | WHITE/<br>DARK<br>GREEN<br>035 | WHITE/<br>ORANGE<br>029 | WHITE/<br>MAROON<br>045 | WHITE/<br>LIGHT<br>BLUE<br>055 | WHITE/<br>GOLD<br>025 | WHITE/<br>PURPLE/<br>050 | WHITE/<br>KELLY<br>030 | WHITE/<br>SILVER<br>GREY<br>016 | WHITE/<br>TEAL<br>063 |
|------------------------|----------------------|------------------------|-----------------------|--------------------------------|-------------------------|-------------------------|--------------------------------|-----------------------|--------------------------|------------------------|---------------------------------|-----------------------|

## Sport Sock

- 38% nylon/31% cotton/16% acrylic/7% polyester/5% elastic/3% spandex
- Knee-length tube sock with fold-down cuff
- Fully cushioned foot
- Arch and ankle support

**328060 Adult**  
S-L

Call for Price



BLACK  
080

LIME  
096

NAVY  
065

RASPBERRY  
047

ROYAL  
060

SCARLET  
083

WHITE  
005

## Game Sock

- 91% nylon/5% polyester/4% elastic
- Knee-length tube sock

**319810 Adult**  
S-L

Call for Price



BLACK  
080

NAVY  
065

ROYAL  
060

SCARLET  
083

WHITE  
005

## Stirrup

- 91% nylon/5% polyester/4% elastic
- Knee length
- Knit in elastic cuff
- Stirrup cut length 7"

<b>6014</b>	<b>Adult 19"</b>	Call for Price
<b>6013</b>	<b>Intermediate 17"</b>	Call for Price
<b>6012</b>	<b>Youth 15"</b>	Call for Price







## Wicking Athletic Socks

- 70% lucool wicking polyester/  
13% nylon/12% elastic/5% spandex
- Knee-length tube sock
- Cushioned toe, sole and heel

<b>6085</b>	<b>Adult 10 - 13</b>	Call for Price
<b>6086</b>	<b>Intermediate 9 - 11</b>	Call for Price
<b>6087</b>	<b>Youth 7 - 9</b>	Call for Price



## Game Socks

- 91% nylon/5% polyester/4% elastic
- Tube sock
- Slightly below the knee

<b>6025</b>	<b>Adult 10 - 13</b>	Call for Price
<b>6020</b>	<b>Intermediate 9 - 11</b>	Call for Price
<b>6021</b>	<b>Youth 7 - 9</b>	Call for Price



**Core Belt** (Holloway)

**Baseball Belt** (High Five)

**Elastic Baseball Belt** (Augusta Sportswear)

- Heavy-duty stretch elastic webbing
- Matching color embossed vinyl tabs and slider for adjustability
- Nickel-finished hardware

Call for Price



**221007** One size adjustable

HOLLOWAY



**319820** Adult    **319821** Youth

HIGH FIVE



**6001** Adult    **6002** Youth

AUGUSTA SPORTSWEAR





**Dagger Sleeve** (Holloway)

**Solid Sleeve** (Augusta Sportswear)

**Digi Camo Sleeve** (Augusta Sportswear)

- 84% polyester/16% spandex knit
- Roller printed to reduce chance of dye migration on style 2612
- Ultra tight fit
- Flatlock stitching to reduce skin abrasion
- Top hem with elastic to secure in place

Call for Price

HOLLOWAY LOGO ONLY  
ON 224099 | 224299



2612 | 2613

HOLLOWAY

**224099** Adult S/M, L/XL **COMPR.**

**224299** Youth **COMPR.**



BLACK 080    WHITE 005    SCARLET 083    ROYAL 060    NAVY 065    GRAPHITE 059    LIME 096    ORANGE 029

AUGUSTA SPORTSWEAR

**2610** Adult S/M, L/XL **COMPR.**

**2611** Youth **COMPR.**



BLACK 080    WHITE 005    RED 040    ROYAL 060    NAVY 065    GRAPHITE 059

AUGUSTA SPORTSWEAR

**2612** Adult S/M, L/XL **COMPR.**

**2613** Youth **COMPR.**



WHITE DIGI 13G

## Expandable Bat Backpack

- 600-denier polyester with PVC coating
- Ventilated zippered main compartment with two zipper pulls
- Two bat holders at sides with dual elastic drawcord and cordlocks
- Metal fence hooks
- Zippered front compartment with two zipper pulls
- Zippered inside pocket
- Expandable separate zippered lower compartment with two zipper pulls
- Padded back for support and comfort
- Padded shoulder straps with adjustable side tabs
- Web handle at top of backpack
- Plastic hardware
- Durable vinyl on bottom of backpack to retain shape
- Bottom board attached to inside of backpack

**411** 13"W x 25"H x 10"D  
Call for Price



BLACK  
080





## Dugout Backpack

- 600-denier polyester with PVC coating, shiny hexagon patterned polyester inserts
- Zippered main compartments with two zipper pulls
- Side mesh pockets and elastic hold two bats
- Zippered top pocket with J fence hook
- Zippered front pocket removes for easy embellishment
- Zippered inside pocket
- Padded back for support and comfort
- Padded shoulder straps with adjustable side tabs
- Web handle at top of backpack
- Plastic hardware
- Durable vinyl on bottom of backpack to retain shape.



ZIPPER TOP POCKET  
WITH J FENCE HOOK



REMOVABLE POCKET  
FOR EASY EMBELLISHMENT

**1767** 18½"W x 13½"H x 6"D  
Call for Price



BLACK/  
GRAPHITE/  
WHITE  
489

RED/  
GRAPHITE/  
WHITE  
397

ROYAL/  
GRAPHITE/  
WHITE  
648

NAVY/  
GRAPHITE/  
WHITE  
371



MAROON/  
GRAPHITE/  
WHITE  
393

DARK  
GREEN/  
GRAPHITE/  
WHITE  
646

LIME/  
GRAPHITE/  
WHITE  
W18

POWER  
PINK/  
GRAPHITE/  
WHITE  
845



# Fit Guide

## COMPR.

**Compression** products hug the body for an ultra-tight fit. The compression fabrics have 4-way stretch, allowing these garments to achieve their snug fit and maintain their shape.

## FITTED

**Fitted** products stretch to fit the body, but they do not show the same degree of body definition as the compression fit styles. These products conform to the body's shape.

## SEMI-FIT

**Semi-Fit** products flow over the contours of the body, showing some body definition.

## RELAXED

**Relaxed** fit products do not hug the body. These products fit loosely on the body, not showing body definition.

# Icon Keys



### New Spring 2018 Products

All new sizes & colors appear in **BOLD**



### True Hue Technology

Prevents dye migration



### Water Resistant

Resists rain & water to keep the body protected & dry



### Custom Braid

Custom braid options available



### Moisture Management

Fabric wicks moisture away keeping the body cool & dry



### 4-Way Stretch

Stretch properties allow for increased mobility



### Odor Resistant



### Sport Flex

