

A DIVISION OF EAST COAST MEDIA

TRAINING

2017 TRAINING ASSORTMENT Easily shop by style and price.

TRAINING ASSORTMENT // FALL/WINTER 2017

LONG SLEEVE



SPARK 2.0 SHIRT
\$14.00 MSRP
ADULT, LADIES' AND YOUTH SIZING,
PAGE 66



GAUGE SHIRT L/S
\$16.60 MSRP
ADULT AND YOUTH SIZING, PAGE 69



TYPHOON SHIRT 3/4 SLEEVE
\$20.80 MSRP
ADULT AND YOUTH SIZING, PAGE 74



ELECTRIFY 2.0 SHIRT L/S
\$20.80 MSRP
ADULT, LADIES' AND YOUTH
SIZING, PAGE 71



**ELECTRIFY 2.0 SHIRT
V-NECK L/S** \$20.80 MSRP
LADIES' SIZING, PAGE 71



STELLAR SHIRT
\$25.00 MSRP
LADIES' SIZING, PAGE 86



ELECTRON SHIRT L/S
\$25.00 MSRP
ADULT AND YOUTH SIZING, PAGE 72



SPACE DYE SHIRT L/S
\$27.60 MSRP
LADIES' SIZING, PAGE 82



TORPEDO SHIRT L/S
\$31.20 MSRP
ADULT AND YOUTH SIZING, PAGE 77



NEW ARC SHIRT L/S
\$34.30 MSRP
ADULT, LADIES' AND YOUTH SIZING, PAGE 65



SHIELD SHIRT
\$41.60 MSRP
ADULT SIZING, PAGE 78

SHORT SLEEVE



ZOOM 2.0 SHIRT
\$9.00 MSRP
ADULT, LADIES', YOUTH AND GIRLS'
SIZING, PAGE 67



GAUGE SHIRT S/S
\$11.40 MSRP
ADULT AND YOUTH SIZING, PAGE 68



ERUPT 2.0 SHIRT
\$15.10 MSRP
ADULT AND YOUTH SIZING, PAGE 78



ELECTRIFY 2.0 SHIRT S/S
\$15.60 MSRP
ADULT, LADIES' AND YOUTH SIZING, PAGE 70



**ELECTRIFY
2.0 SHIRT V-NECK S/S**
\$15.60 MSRP LADIES' SIZING, PAGE 70



TORPEDO SHIRT S/S
\$17.70 MSRP
ADULT AND YOUTH SIZING, PAGE 77



ELECTRON SHIRT S/S
\$18.70 MSRP
ADULT AND YOUTH SIZING, PAGE 73



SPACE DYE SHIRT S/S
\$20.30 MSRP
LADIES' SIZING, PAGE 82



SEISMIC SHIRT S/S
\$21.80 MSRP
ADULT AND YOUTH SIZING, PAGE 75



PISTON SHIRT
\$21.80 MSRP
ADULT, LADIES' AND YOUTH SIZING, PAGE 78



NEW ARC SHIRT S/S
\$23.90 MSRP
ADULT, LADIES' AND YOUTH SIZING, PAGE 64



TIDAL SHIRT S/S
\$27.00 MSRP
ADULT AND YOUTH SIZING, PAGE 76



VOLTAGE SHIRT
\$30.20 MSRP
ADULT SIZING, PAGE 76

TRAINING // SHIRTS

ADULT 222544/YOUTH 222644



TEMPLATE SP166

GRID MESH BACK

dry-Excel
BIG



ARC COLLECTION

SEE ENTIRE COLLECTION ON PG. 6

LADIES' 222744



GRID MESH BACK

TEMPLATE SP139



dry-Excel
BIG

AVAILABLE IN ADULT, YOUTH & LADIES'



BLACK/WHITE
420



CARBON/WHITE
F52



FOREST/WHITE
436



MAROON/WHITE
380



NAVY/WHITE
301



ORANGE/WHITE
320



PURPLE/WHITE
450



ROYAL/WHITE
280



SCARLET/WHITE
408



WHITE/CARBON
E94

AVAILABLE IN ADULT & YOUTH ONLY



KELLY/WHITE
340



LIGHT GOLD/WHITE
752

NEW

ARC SHIRT S/S // ADULT 222544/YOUTH 222644/LADIES' 222744

- Dry-Excel™ wicking polyester knit has high mechanical stretch
- Sublimated sleeve print
- Side inserts, sleeve and back body have Dry-Excel™ polyester wicking grid mesh
- Self fabric neck tape
- V-neckline on Ladies'

222544 MSRP: \$23.90 ADULT S-4X MODERN FIT

222644 MSRP: \$21.80 YOUTH S-XL MODERN FIT

222744 MSRP: \$23.90 LADIES' XS-2X, SELECT COLORS CLASSIC FIT



TEMPLATE
SP162



**ARC
COLLECTION**
SEE ENTIRE COLLECTION ON PG. 6



COORDINATING POLOS
ADULT 222548, LADIES' 222748 PG. 91



GRID MESH
BACK



BLACK/WHITE
420



CARBON/WHITE
F52



FOREST/WHITE
436



LIGHT GOLD/WHITE
752



MAROON/WHITE
380



NAVY/WHITE
301



ORANGE/WHITE
320



PURPLE/WHITE
450



ROYAL/WHITE
280



SCARLET/WHITE
408

NEW

ARC SHIRT L/S // ADULT 222541/YOUTH 222641

- Dry-Excel™ wicking polyester knit has high mechanical stretch
- Sublimated sleeve print
- Side inserts, sleeve and back body have Dry-Excel™ polyester wicking grid mesh
- Self fabric neck tape

222541 MSRP: \$34.30 ADULT S-3X MODERN FIT

222641 MSRP: \$32.20 YOUTH S-XL MODERN FIT

TRAINING // SHIRTS

SPARK 2.0 SHIRT // ADULT 222521/YOUTH 222621/LADIES' 222721

- Dry-Excel™ wicking knit with mechanical stretch
- Value-priced option
- Ladies' V-neckline

222521 MSRP: \$14.00 ADULT S-3X, SELECT COLORS 4X* SEMI-FITTED

222621 MSRP: \$13.00 YOUTH S-XL SEMI-FITTED

222721 MSRP: \$14.00 LADIES' XS-2X SEMI-FITTED



FLEX SHIRT // ADULT 222450/ LADIES' 222353/GIRLS' 222253

- Dry-Excel™ Micro-Interlock is a smooth polyester fabric with high mechanical stretch that includes superior wicking technology and an odor-resistant treatment
- V-neckline on Ladies' and Girls'

222450 MSRP: \$16.10 ADULT S-3X SEMI-FITTED

222353 MSRP: \$17.20 LADIES' XS-2X SEMI-FITTED

222253 MSRP: \$14.00 GIRLS' S-L SEMI-FITTED



**ZOOM 2.0 SHIRT // ADULT 222520/YOUTH 222620/
LADIES' 222720/GIRLS' 222920**

- Dry-Excel™ wicking polyester knit has high mechanical stretch
- Value-priced option
- Ladies' and Girls' V-neckline

222520 MSRP: \$9.00 ADULT S-3X, SELECT COLORS 4X* SEMI-FITTED

222620 MSRP: \$8.00 YOUTH S-XL SEMI-FITTED

222720 MSRP: \$9.00 LADIES' S-3X SEMI-FITTED

222920 MSRP: \$8.00 GIRLS' S-XL SEMI-FITTED

ADULT 222520/
YOUTH 222620



**EXCELLENT
VALUE**

TEMPLATE TW52
IN INK

dry-
Excel

BIG

LADIES' 222720/
GIRLS' 222920



TEMPLATE SP137

dry-
Excel

BIG

AVAILABLE IN ADULT, YOUTH, LADIES' AND GIRLS'



AVAILABLE IN ADULT, YOUTH AND LADIES' ONLY



AVAILABLE IN ADULT AND YOUTH ONLY



TRAINING // SHIRTS



**GAUGE SHIRT S/S // ADULT 222523/
YOUTH 222623**

- Dry-Excel™ 100% polyester knit has a peached hand for cotton-like softness

222523 MSRP: \$11.40 ADULT S-3X SEMI-FITTED
222623 MSRP: \$10.40 YOUTH S-XL SEMI-FITTED



GAUGE SHIRT L/S // ADULT 222525/YOUTH 222625

- Dry-Excel™ 100% polyester knit has a peached hand for cotton-like softness

222525 MSRP: \$16.60 ADULT S-3X SEMI-FITTED

222625 MSRP: \$15.60 YOUTH S-XL SEMI-FITTED

**COTTON HAND
FEEL WITH
POLYESTER
PERFORMANCE**



TEMPLATE
SP148

dry-
Excel



TRAINING // SHIRTS

ADULT 222522/YOUTH 222622



TEMPLATE SP135

TWO LADIES' NECKLINES

LADIES' 222718



TEMPLATE SP152

dry-Excel

LADIES' 222722



TEMPLATE SP140

dry-Excel

SNOWY COLLECTION
SEE ENTIRE COLLECTION ON PG. 7

**ELECTRIFY 2.0 SHIRT S/S // ADULT 222522/
YOUTH 222622/LADIES' 222722/LADIES' V-NECK 222718**

- Snowy Heather fabric is a polyester knit with high mechanical stretch
- Bold, two-color heather pattern achieved in the dye process, making it easy to decorate
- Raglan sleeves for a greater range of motion

222522 MSRP: \$15.60 ADULT S-3X MODERN FIT
222622 MSRP: \$14.60 YOUTH S-XL CLASSIC FIT
222722 MSRP: \$15.60 LADIES' CREWNECK XS-2X CLASSIC FIT
222718 MSRP: \$15.60 LADIES' V-NECK XS-2X, SELECT COLORS* CLASSIC FIT

AVAILABLE IN ALL STYLES



BLACK HEATHER
U36*

GRAPHITE HEATHER
R13*

AVAILABLE IN ADULT, YOUTH & LADIES' CREWNECK



CARDINAL HEATHER
T04

FOREST HEATHER
U41

KELLY HEATHER
U10

LIGHT GOLD HEATHER
U63

AVAILABLE IN ADULT & YOUTH ONLY



BRIGHT BLUE HEATHER
G96

AVAILABLE IN LADIES' CREW ONLY



NAVY HEATHER
U22*

ROYAL HEATHER
U55*

SCARLET HEATHER
T20*

MAROON HEATHER
T09

ORANGE HEATHER
U78

PURPLE HEATHER
U86



POWER PINK HEATHER
V95

ADULT 222524/YOUTH 222624



TEMPLATE SP109

dry-Excel

TWO
LADIES'
NECKLINES

LADIES' 222717



TEMPLATE SP146

dry-Excel

LADIES' 222724



TEMPLATE SP138

dry-Excel

**SNOWY
COLLECTION**

SEE ENTIRE COLLECTION ON PG. 7

**ELECTRIFY 2.0 SHIRT L/S // ADULT 222524/
YOUTH 222624/LADIES' CREW 222724/LADIES' V-NECK 222717**

- Snowy Heather fabric is a polyester knit with high mechanical stretch
- Bold, two-color heather pattern achieved in the dye process, allowing for risk-free decoration
- Raglan sleeves for a greater range of motion

222524 MSRP: \$20.80 ADULT S-2X, SELECT COLORS 3X* MODERN FIT

222624 MSRP: \$19.80 YOUTH S-XL CLASSIC FIT

222724 MSRP: \$20.80 LADIES' CREWNECK XS-2X CLASSIC FIT

222717 MSRP: \$20.80 LADIES' V-NECK XS-2X, SELECT COLORS* CLASSIC FIT

AVAILABLE IN ALL STYLES & ADULT 3X



BLACK HEATHER
U36*



GRAPHITE HEATHER
R13*



CARDINAL HEATHER
T04



FOREST HEATHER
U41



KELLY HEATHER
U10



LIGHT GOLD HEATHER
U63



BRIGHT BLUE HEATHER
G96

AVAILABLE IN ADULT, YOUTH & LADIES' CREWNECK



NAVY HEATHER
U22*



ROYAL HEATHER
U55*



SCARLET HEATHER
T20*



MAROON HEATHER
T09



ORANGE HEATHER
U78



PURPLE HEATHER
U86



POWER PINK HEATHER
V95

AVAILABLE IN LADIES'
CREW ONLY



PERFECT FOR
HEAT TRANSFER
NAMES



TEMPLATE
SP149

**SNOWY
COLLECTION**
SEE ENTIRE COLLECTION ON PG. 7

*dry-
Excel*

ELECTRON SHIRT L/S // ADULT 222527/YOUTH 222627

- Dry-Excel™ wicking knit with mechanical stretch
- Inserts and collar feature Snowy Heather fabric, a polyester knit in a bold, two-color heather pattern with high mechanical stretch

222527 MSRP: \$25.00 ADULT S-3X CLASSIC FIT

222627 MSRP: \$22.90 YOUTH S-XL CLASSIC FIT



BLACK/GRAPHITE
HEATHER
R27

FOREST/GRAPHITE
HEATHER
L68

LIGHT GOLD/
GRAPHITE HEATHER
L67

MAROON/GRAPHITE
HEATHER
W39

NAVY/GRAPHITE
HEATHER
S22

ORANGE/GRAPHITE
HEATHER
Y98

ROYAL/GRAPHITE
HEATHER
S66

SCARLET/GRAPHITE
HEATHER
T23

WHITE/GRAPHITE
HEATHER
L91



TEMPLATE
SP150



SOLID INSERTS
AND TRIM

**SNOWY
COLLECTION**
SEE ENTIRE COLLECTION ON PG. 7

dry-
Excel



COORDINATING SHORT
ADULT 222528, YOUTH 222628,
PG. 79

ELECTRON SHIRT S/S // ADULT 222526/YOUTH 222626

- Dry-Excel™ wicking polyester knit has high mechanical stretch
- Back insert width on Adult is 3.5" tall, Youth 2.5" tall
- Inserts and collar feature a polyester knit in a bold, dry-Excel™ wicking fabric, with mechanical stretch

222526 MSRP: \$18.70 ADULT S-3X CLASSIC FIT

222626 MSRP: \$17.70 YOUTH S-XL CLASSIC FIT



GRAPHITE
HEATHER/BLACK
X40

GRAPHITE
HEATHER/FOREST
L93

GRAPHITE
HEATHER/LIGHT GOLD
L94

GRAPHITE
HEATHER/MAROON
X86

GRAPHITE
HEATHER/NAVY
X47

GRAPHITE
HEATHER/ORANGE
X43

GRAPHITE
HEATHER/PURPLE
X87

GRAPHITE
HEATHER/ROYAL
X49

GRAPHITE
HEATHER/SCARLET
L92

TRAINING // SHIRTS

TEMPLATE SP149



PERFORMANCE PROMISE

PERFORMANCE ON THE FIELD, ON THE SIDELINE AND IN THE STANDS. **GUARANTEED.**

SEE PERFORMANCE PROMISE LIMITED WARRANTY FOR DETAILS.

SEE PG. 203.

TYPHOON SHIRT 3/4 SLEEVE // ADULT 222538/YOUTH 222638

- Dry-Excel™ Heather fabric is a performance polyester knit with high mechanical stretch and Snag Resistant technology
- 3/4 length raglan sleeves for range of motion in our dry-Excel™ wicking knit
- Decoration friendly

222538 MSRP: \$20.80 ADULT S-3X SEMI-FITTED

222638 MSRP: \$18.70 YOUTH S-XL SEMI-FITTED





TEMPLATE SP135



SEISMIC COLLECTION

SEE ENTIRE COLLECTION ON PG. 7

dry-Excel



COORDINATING POLOS ADULT 222536, LADIES' 222736, PG. 93

SEISMIC SHIRT S/S // ADULT 222537/YOUTH 222637

- Dry-Excel™ Heather fabric is a performance polyester knit with high mechanical stretch and Snag Resistant technology
- Decoration friendly
- Tonal design on front and back

222537 MSRP: \$21.80 ADULT S-3X CLASSIC FIT

222637 MSRP: \$19.80 YOUTH S-XL CLASSIC FIT



BLACK HEATHER U36

CARDINAL HEATHER T04

FOREST HEATHER U41

GRAPHITE HEATHER R13

KELLY HEATHER U10

LIGHT GOLD HEATHER U63

MAROON HEATHER T09

NAVY HEATHER U22

ORANGE HEATHER U78

PURPLE HEATHER U86

ROYAL HEATHER U55

SCARLET HEATHER T20

TRAINING // SHIRTS

TIDAL SHIRT S/S // ADULT 222413/YOUTH 222213

- Dry-Excel™ Micro-Interlock is a smooth polyester fabric with high mechanical stretch that includes superior wicking technology and an odor-resistant treatment
- Infrared dot printed dry-Excel™ pin-hole micromesh inserts placed along heat zones for breathability
- Raglan sleeves

222413 MSRP: \$27.00 ADULT S-3X SEMI-FITTED

222213 MSRP: \$25.00 YOUTH S-XL SEMI-FITTED



BLACK/
WHITE PRINT
D75

GRAPHITE/
WHITE PRINT
D47

ORANGE/
WHITE PRINT
D81



ROYAL/
WHITE PRINT
D83

SCARLET/
WHITE PRINT
D84



TRUE NAVY/
WHITE PRINT
D80

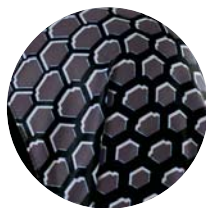
WHITE/
WHITE PRINT
D85

**INFRARED
COLLECTION**
SEE ENTIRE COLLECTION ON PG. 6

VOLTAGE SHIRT // ADULT 228102

- Dry-Excel™ Micro-Interlock, a polyester knit with wicking and odor-resistant properties
- Dry-Excel™ modified raglan sleeves with sublimated Hot Mesh pattern

228102 MSRP: \$30.20 ADULT S-3X SEMI-FITTED



HOT MESH PRINT



BLACK/CARBON/
SILVER GREY
H40

DK MAROON/
CARBON/
SILVER GREY
H44

FOREST/CARBON/
SILVER GREY
H45



ROYAL/CARBON/
SILVER GREY
H42

SCARLET/CARBON/
SILVER GREY
H43



TRUE NAVY/
CARBON/
SILVER GREY
H41

WHITE/CARBON/
SILVER GREY
H46



SCREEN MESH PRINT



COORDINATING SHORT
ADULT 229512,
YOUTH 229212, PG. 81



TEMPLATE SP141

dry-Excel

TORPEDO SHIRT S/S // ADULT 222503/YOUTH 222203

- Dry-Excel™ Micro-Interlock, a polyester knit with wicking and odor-resistant properties, with our Screen Mesh Print on the body
- Pattern is roller printed onto the garment, making it decoration friendly

222503 MSRP: \$17.70 ADULT S-3X SEMI-FITTED

222203 MSRP: \$16.60 YOUTH S-XL SEMI-FITTED

TORPEDO COLLECTION

SEE ENTIRE COLLECTION ON PG. 6



SCREEN MESH PRINT



COORDINATING POLO
ADULT 222531, PG. 98



TEMPLATE SP98

dry-Excel

TORPEDO SHIRT L/S // ADULT 222511/YOUTH 222211

- Dry-Excel™ Micro-Interlock, a polyester knit with wicking and odor-resistant properties, with our Screen Mesh Print on the body
- Raglan sleeves for greater range of motion
- Pattern is roller printed onto the garment, making it decoration friendly

222511 MSRP: \$31.20 ADULT S-3X SEMI-FITTED

222211 MSRP: \$29.10 YOUTH S-XL SEMI-FITTED



BLACK/
CARBON
D86

BRIGHT BLUE/
CARBON
E89

BRIGHT YELLOW/
CARBON
E87



GRAPHITE/
CARBON
E95



LIME/
CARBON
E88



NAVY/
CARBON
E81



ORANGE/
CARBON
E96



ROYAL/
CARBON
E86



SCARLET/
CARBON
E90



WHITE/
CARBON
E94



BLACK/
CARBON
D86

BRIGHT BLUE/
CARBON
E89

BRIGHT YELLOW/
CARBON
E87



GRAPHITE/
CARBON
E95



LIME/
CARBON
E88



NAVY/
CARBON
E81



ORANGE/
CARBON
E96



ROYAL/
CARBON
E86



SCARLET/
CARBON
E90



WHITE/
CARBON
E94

TRAINING // SHIRTS

ERUPT 2.0 SHIRT // ADULT 228101/YOUTH 228201

- 100% dry-Excel™ polyester defined by its bold, tri-color, all-over printed fabric
- 19 colors, excellent value
- Updated Modern Camo design
- Pattern is roller printed onto the garment, making it decoration friendly

228101 MSRP: \$15.10
ADULT S-4X SEMI-FITTED
228201 MSRP: \$14.00
YOUTH S-XL SEMI-FITTED



TEMPLATE SP126

**PRINTED
PATTERN,
DECORATION
FRIENDLY**

dry-Excel
BIG



BLACK/
CARBON/
WHITE
F80

BLACK/
LT GOLD/
WHITE
R21

BLACK/
ORANGE/
WHITE
611

BLACK/
SCARLET/
WHITE
R20

BLACK/
VEGAS
GOLD/
WHITE
612

BRIGHT
YELLOW/
CARBON/
WHITE
H10

FOREST/
CARBON/
WHITE
F96



KELLY/
CARBON/
WHITE
H14

LIME/
CARBON/
WHITE
H11

MAROON/
CARBON/
WHITE
F95

NAVY/
CARBON/
WHITE
F81

NAVY/
LT GOLD/
WHITE
S30

NAVY/
VEGAS
GOLD/
WHITE
312



PURPLE/
CARBON/
WHITE
H12

ROYAL/
CARBON/
WHITE
F83

ROYAL/
LT GOLD/
WHITE
S70

SAND/
DK GREEN/
LT GREEN
H55

UNIV BLUE/
CARBON/
WHITE
H13

SCARLET/
CARBON/
WHITE
F84

PISTON SHIRT // ADULT 222501/YOUTH 222201/ LADIES' 222301

- Dry-Excel™ Micro-Interlock, a polyester knit with wicking and odor-resistant properties
- Contrasting flatlock stitching for reduced abrasion
- Ladies' V-neckline

ADULT 222501/YOUTH 222201



LADIES' 222301

TEMPLATE SP56

TEMPLATE SP9

dry-Excel



BLACK/
CARBON
D86

DK MAROON/
CARBON
E74

FOREST/
CARBON
E79

LT GOLD/
BLACK
C08

LT GOLD/
TRUE NAVY
E75

ORANGE/
BLACK
321



ROYAL/
CARBON
E86

ROYAL/
LT GOLD
S67

SCARLET/
BLACK
406

SCARLET/
CARBON
E90

TRUE NAVY/
CARBON
E73

WHITE/
CARBON
E94

SHIELD SHIRT // ADULT 222504

- Dry-Excel™ Micro-Interlock, a polyester knit with wicking and odor-resistant properties on the body and inserts
- Contrasting dry-Excel™ 4-Way Stretch mesh fabric on sleeves and back shield
- Modified raglan sleeve for greater range of motion

222504 MSRP: \$41.60
ADULT XS-3X CLASSIC FIT



TEMPLATE SP135

dry-Excel



BLACK/
GRAPHITE/
WHITE
489

CARBON/
GRAPHITE/
WHITE
E78

DK MAROON/
GRAPHITE/
WHITE
W42

FOREST/
GRAPHITE/
WHITE
W19

LT GOLD/
GRAPHITE/
WHITE
E77



ORANGE/
GRAPHITE/
WHITE
W62

ROYAL/
GRAPHITE/
WHITE
648

SCARLET/
GRAPHITE/
WHITE
W91

TRUE NAVY/
GRAPHITE/
WHITE
F20

NEW

HELIUM SHORT // ADULT 222546/YOUTH 222646

- Dry-Excel™ wicking knit with mechanical stretch
- Exposed elasticized drawstring waist
- Side pockets on seam
- Inseam: Adult 9", Youth 8"

222546 MSRP: \$21.00 ADULT S-3X CLASSIC FIT
222646 MSRP: \$19.00 YOUTH S-XL CLASSIC FIT



dry-Excel



BLACK/WHITE 420
 CARBON/WHITE F52
 FOREST/WHITE 436
 LIGHT GOLD/WHITE 752



MAROON/WHITE 380
 NAVY/WHITE 301
 ORANGE/WHITE 320



PURPLE/WHITE 450
 ROYAL/WHITE 280
 SCARLET/WHITE 408

ELECTRON SHORT // ADULT 222528/YOUTH 222628

- Dry-Excel™ wicking knit with mechanical stretch
- Inserts feature Snowy Heather fabric, a polyester knit in a bold, two-color heather pattern with high mechanical stretch
- Side pockets
- Elasticized drawcord waist
- Inseam: Adult 9", Youth 8"

222528 MSRP: \$21.30 ADULT S-3X CLASSIC FIT
222628 MSRP: \$19.20 YOUTH S-XL CLASSIC FIT



SNOWY HEATHER INSERT

dry-Excel

SNOWY COLLECTION
 SEE ENTIRE COLLECTION ON PG. 7



BLACK/BLACK HEATHER L23
 CARBON/GRAPHITE HEATHER L28
 FOREST/FOREST HEATHER L46



LIGHT GOLD/LIGHT GOLD HEATHER L49
 MAROON/MAROON HEATHER L47
 NAVY/NAVY HEATHER L25



ORANGE/ORANGE HEATHER L48
 ROYAL/ROYAL HEATHER L26
 SCARLET/SCARLET HEATHER L27

TRAINING // BOTTOMS

WICKING AND
ODOR-RESISTANT



dry-
Excel

HUSTLE SHORT // ADULT 229555/ YOUTH 229255

- Dry-Excel™ Micro-Interlock is a smooth polyester fabric with high mechanical stretch that includes superior wicking technology and an odor-resistant treatment
- Covered, elasticized drawstring waist
- Inseams: Adult 9", Youth 8"

229555 MSRP: \$13.50 ADULT S-3X CLASSIC FIT

229255 MSRP: \$12.50 YOUTH S-L CLASSIC FIT



BLACK
080

GRAPHITE
059

ROYAL
060



SCARLET
083

TRUE NAVY
F85



SIDE
POCKETS

dry-
Excel

WHISK SHORT // ADULT 229505/ YOUTH 229205

- Dry-Excel™ Micro-Interlock is a smooth polyester fabric with high mechanical stretch that includes superior wicking technology and an odor-resistant treatment
- Covered, elasticized drawstring waist
- Easy-entry side pockets
- Inseam: Adult 9", Youth 8"

229505 MSRP: \$16.60 ADULT S-3X CLASSIC FIT

229205 MSRP: \$15.60 YOUTH S-XL CLASSIC FIT



BLACK
080

GRAPHITE
059

ROYAL
060



SCARLET
083

TRUE NAVY
F85

TRAINING TIGHT // ADULT 221039

- Dry-Excel™ 4-Way Stretch is a smooth 90% polyester and 10% spandex fabric with high stretch for extended range of motion and wicking technology with an odor-resistant treatment
- Flatlock stitching reduces skin abrasion
- Elasticized drawstring waist
- Full ankle length

**221039 MSRP: \$31.20
ADULT S-3X FITTED**

FULL
LENGTH
TIGHT

ADULT 221039



BLACK
080

dry-
Excel



COORDINATING LADIES' TIGHT
LADIES' 221399, PG. 85



SCREEN MESH
PRINT DETAIL

TORPEDO COLLECTION

SEE ENTIRE COLLECTION ON PG. 6

4-WAY
STRETCH MESH



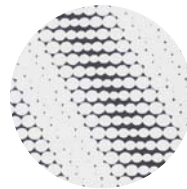
TEMPLATE X2

TORPEDO SHORT // ADULT 229512/YOUTH 229212

- Dry-Excel™ 4-Way Stretch mesh provides ventilation and comfort
- Micro-Interlock polyester knit with wicking and odor-resistant properties with our Screen Mesh Print on the side panels
- Covered, elasticized drawstring waist
- Easy-entry side pockets
- Inseam: Adult 10", Youth 9"

229512 MSRP: \$31.20 ADULT S-3X CLASSIC FIT

229212 MSRP: \$29.10 YOUTH S-XL CLASSIC FIT



SCREEN MESH PRINT



BLACK/BLACK/
CARBON
E57

BRIGHT BLUE/BRIGHT
BLUE/CARBON
E66

BRIGHT YELLOW/
BRIGHT YELLOW/
CARBON
E65



GRAPHITE/
GRAPHITE/
CARBON
E72



LIME/LIME/
CARBON
E68



NAVY/NAVY/
CARBON
E58



ORANGE/ORANGE/
CARBON
E67



ROYAL/ROYAL/
CARBON
E59



SCARLET/SCARLET/
CARBON
E60



WHITE/WHITE/
CARBON
E69



SIDE
POCKETS



TEMPLATE X2

BASH SHORT // ADULT 229518/YOUTH 229218

- Dry-Excel™ Micro-Interlock is a smooth polyester fabric with high mechanical stretch that includes superior wicking technology and an odor-resistant treatment
- Covered, elasticized drawstring waist
- Easy-entry side pockets
- Inseam: Adult 10", Youth 9"

229518 MSRP: \$29.10 ADULT S-3X CLASSIC FIT

229218 MSRP: \$27.00 YOUTH S-XL CLASSIC FIT



GRAPHITE/
BLACK
172

GRAPHITE/
BRIGHT
BLUE
D48

GRAPHITE/
BRIGHT
YELLOW
D49

GRAPHITE/
DK MAROON
193



GRAPHITE/
FOREST
D50

GRAPHITE/
LIME
D52

GRAPHITE/
ORANGE
U94

GRAPHITE/
PURPLE
U95



GRAPHITE/
U96

GRAPHITE/
SCARLET
171

GRAPHITE/
TRUE NAVY
D51

GRAPHITE/
WHITE
R04

TRAINING // LADIES' SPECIFIC



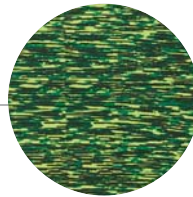
SPACE DYE SHIRT S/S // LADIES' 229372

- 100% dry-Excel™ Micro-Interlock, a polyester knit with wicking and odor-resistant properties
- Defined by the all-over space dye printed pattern made up of true team colors
- Pattern is roller printed onto the garment, making it decoration friendly

229372 MSRP: \$20.30 LADIES' XS-2X SEMI-FITTED

SPACE DYE COLLECTION

SEE ENTIRE COLLECTION ON PG. 6



SPACE DYE PRINT



SPACE DYE SHIRT L/S // LADIES' 229365

- 100% dry-Excel™ Micro-Interlock, a polyester knit with wicking and odor-resistant properties
- Defined by the all-over space dye printed pattern made up of true team colors
- Pattern is roller printed onto the garment, making it decoration friendly

229365 MSRP: \$27.60 LADIES' XS-2X SEMI-FITTED



BLACK 080



BLUE 054



GREEN 732



ORANGE 029



POWER PURPLE C82



RED 040



SILVER 099



YELLOW 020



BLACK 080



BLUE 054



GREEN 732



ORANGE 029



POWER PURPLE C82



RED 040



SILVER 099



YELLOW 020

SPACE DYE TANK // LADIES' 222733/GIRLS' 222933

- 100% dry-Excel™ Micro-Interlock, a polyester knit with wicking and odor-resistant properties
- Defined by the all-over space dye printed pattern made up of true team colors
- Dry-Excel™ Maze Mesh inserts at shoulders
- Pattern is roller printed onto the garment, making it decoration friendly
- Gathered back detail and racerback design
- Contoured bottom hem

222733 MSRP: \$18.70 LADIES' S-2X CLASSIC FIT
222933 MSRP: \$16.60 GIRLS' S-XL CLASSIC FIT



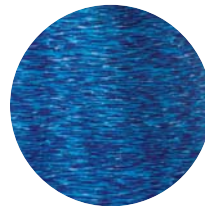
TEMPLATE
SP147



MAZE MESH
SHOULDERS

**SPACE DYE
COLLECTION**

SEE ENTIRE COLLECTION ON PG. 7



SPACE DYE PRINT



BLACK/BLACK
425



BLUE/BRIGHT
BLUE
Q19



GREEN/LIME
Q38



ORANGE/BRIGHT
ORANGE
Q18



POWER PURPLE/
POWER PINK
Q39



RED/SCARLET
Q40



SILVER/WHITE
254



YELLOW/BRIGHT
YELLOW
Q37

SPRINTER TANK // LADIES' 221342

- Dry-Excel™ 4-Way Stretch is a smooth polyester/spandex fabric with high stretch for extended range of motion and wicking technology with an odor-resistant treatment
- Body fabric 90% polyester, 10% spandex
- Built-in shelf bra
- Racerback design

221342 MSRP: \$35.40
LADIES' XS-2X FITTED



BLACK/WHITE
420



DK MAROON/WHITE
T41



FOREST/WHITE
436



KELLY/WHITE
340



ORANGE/WHITE
320



PURPLE/WHITE
450



ROYAL/WHITE
280



SCARLET/WHITE
408



TRUE NAVY/WHITE
F90

ENERGIZE SHORT // LADIES' 229325/GIRLS' 229425

- Dry-Excel™ is a lightweight, smooth polyester, micro-denier woven fabric with built-in moisture wicking properties for performance conditions
- Elasticized drawstring waist
- Concealed key pocket
- Inseams: Ladies' 4", Girls' 3.5"

229325 MSRP: \$22.90 LADIES' S-2X CLASSIC FIT

229425 MSRP: \$20.80 GIRLS' S-XL CLASSIC FIT



BLACK/LT GOLD/WHITE R21 BLACK/ORANGE/WHITE 611 BLACK/SCARLET/WHITE R20 BLACK/VEGAS GOLD/WHITE 612 BLACK/WHITE/BLACK 419



FOREST/BLACK/WHITE 148 GRAPHITE/BLACK/WHITE U73 MAROON/BLACK/WHITE 524 NAVY/LT GOLD/WHITE S30 NAVY/VEGAS GOLD/WHITE 312



NAVY/WHITE/NAVY 122 POWER PINK/BLACK/WHITE 456 PURPLE/BLACK/WHITE 497 ROYAL/BLACK/WHITE 526 SCARLET/BLACK/WHITE 952

BOUNDARY SHORT // LADIES' 229369

- Maze Mesh fabric is a dry-Excel™ 94% polyester/6% spandex that is layered with our dry-Excel™ Micro-Interlock
- Curved bottom hem for added mobility
- Wide waistband
- 3" inseam

229369 MSRP: \$21.80

LADIES' XS-2X CLASSIC FIT



BLACK/GRAPHITE R17 BRIGHT BLUE/GRAPHITE D40 BRIGHT ORANGE/GRAPHITE E80 BRIGHT YELLOW/GRAPHITE D41



GRAPHITE/CARBON E95 LIME/GRAPHITE 850 NAVY/GRAPHITE S21 POWER PINK/GRAPHITE 824



ROYAL/GRAPHITE S65 SCARLET/GRAPHITE T22 WHITE/GRAPHITE 751

SQUAD SHORT // LADIES' 229356

- Dry-Excel™ 4-Way Stretch is a smooth polyester/spandex fabric with high stretch for extended range of motion and wicking technology with an odor-resistant treatment
- Low-rise fit with flatlock stitching to reduce skin abrasion
- Wide waistband
- 2.5" inseam

229356 MSRP: \$17.70

LADIES' XS-2X FITTED



BLACK 080



NAVY 065



ROYAL 060



SCARLET 083

TRAINING TIGHT // LADIES' 221399

- Dry-Excel™ 4-Way Stretch is a smooth 90% polyester and 10% spandex fabric with high stretch for extended range of motion and wicking technology with an odor-resistant treatment
- Flatlock stitching reduces skin abrasion
- Elasticized drawstring waist
- Full ankle length

221399 MSRP: \$31.20
LADIES' XS-2X FITTED
BLACK SPACE DYE MSRP: \$33.20



NEW
 BLACK SPACE DYE
 N12



BLACK
 080

BANNER CAPRI // LADIES' 229398

- Dry-Excel™ 4-Way Stretch is a smooth polyester/spandex fabric with high stretch for extended range of motion and wicking technology with an odor-resistant treatment
- Low-rise fit with flatlock stitching to reduce skin abrasion
- Wide waistband with key pocket for storage

229398 MSRP: \$27.00
LADIES' XS-2X FITTED
BLACK SPACE DYE MSRP: \$29.00



NEW
 BLACK SPACE DYE
 N12



BLACK
 080

**SPACE DYE
 COLLECTION**

SEE ENTIRE COLLECTION ON PG. 6

VENT BRA // LADIES' 223300

- Dry-Excel™ 4-Way Stretch is a smooth polyester/spandex fabric with high stretch for extended range of motion and wicking technology with an odor-resistant treatment
- Dry-Excel™ stretch mesh action back with keyhole detail for added flexibility and ventilation
- Medium support

223300 MSRP: \$20.80
LADIES' XS-2X FITTED
BLACK SPACE DYE MSRP: \$22.80



SPACE DYE PRINT



KEYHOLE
 BACK DETAIL



NEW
 BLACK SPACE DYE
 N12



BLACK
 080



GRAPHITE
 059



NAVY
 065



ROYAL
 060



SCARLET
 083



WHITE
 005

TRAINING // LADIES' SPECIFIC

PRECISION TANK // LADIES' 229367

- Maze Mesh fabric is a dry-Excel™ 94% polyester/ 6% spandex that is perfect for layering
- A keyhole, racerback detail is on trend and adds breathability
- Drop tail hem

229367 MSRP: \$16.60 LADIES' XS-2X CLASSIC FIT



KEYHOLE BACK DETAIL



TEMPLATE SP137

dry-Excel



MAZE MESH COLLECTION

SEE ENTIRE COLLECTION ON PG. 6



BLACK 080

BRIGHT BLUE G25

BRIGHT ORANGE K48

BRIGHT YELLOW T50



GRAPHITE 059

LIME 096

NAVY 065

POWER PINK 809



ROYAL 060

SCARLET 083

WHITE 005

GUNNER TANK // JUNIORS' 229379

- Dry-Excel™ Performance Blend fabric has a soft cotton hand with performance properties in a blend of 65% polyester and 35% cotton
- Maze Mesh accents
- Ladies' muscle tank fit with wider neckline, open arm holes for breathability and greater range of motion, making it ideal to layer

229379 MSRP: \$17.70 JUNIORS' XS-2X CLASSIC FIT



COORDINATING BRA LADIES' 223300, PG. 85



WIDER, OPEN ARM HOLES

dry-Excel



ATHLETIC HEATHER/BLACK 158

ATHLETIC HEATHER/BRIGHT BLUE H35

ATHLETIC HEATHER/BRIGHT ORANGE H34

ATHLETIC HEATHER/BRIGHT YELLOW H36

ATHLETIC HEATHER/LIME 643



ATHLETIC HEATHER/NAVY 157

ATHLETIC HEATHER/ROYAL 156

ATHLETIC HEATHER/SCARLET 151

ATHLETIC HEATHER/WHITE 152

STELLAR SHIRT // LADIES' 222727

- Dry-Excel™ wicking knit with mechanical stretch
- Inserts and collar feature Snowy Heather fabric, a polyester knit in a bold, two-color heather pattern with high mechanical stretch
- Ladies' V-neckline

222727 MSRP: \$25.00 LADIES' XS-2X SEMI-FITTED



SNOWY COLLECTION

SEE ENTIRE COLLECTION ON PG. 7



TEMPLATE SP152

dry-Excel



BLACK/GRAPHITE HEATHER R27

LIME/GRAPHITE HEATHER Y72

NAVY/GRAPHITE HEATHER S22

ORANGE/GRAPHITE HEATHER Y98



ROYAL/GRAPHITE HEATHER S66

SCARLET/GRAPHITE HEATHER T23

WHITE/GRAPHITE HEATHER L91